

# CITY OF RUSSELL TRANSPORTATION MASTER PLAN



PREPARED BY

**Bartlett  
& West**

Topeka, Kansas

April 2017

Updated September 2017

# TABLE OF CONTENTS

**Introduction..... 1**

    Figure 1 – W 7<sup>th</sup> Street east of N St. John Street ..... 1

**Existing Conditions..... 2**

    Figure 2 – W 8<sup>th</sup> Street at N Maple Street ..... 2

    Figure 3 – Russell street condition rating and street material inventory map ..... 3

    Figure 4 – Aerial view and condition rating of Russell street network ..... 4

**Snow Routes ..... 5**

    Figure 5 – City of Russell Snow Route map ..... 5

    Table 1 – Recommended street improvement projects ..... 6

    Figure 6 – N Lincoln Street south of W 15<sup>th</sup> Street ..... 6

**Bicycle and Pedestrian Network..... 7**

    Figure 7 – US-281 at E State Street ..... 7

    Figure 8 – Existing sidewalk condition inventory map..... 8

    Table 2 – Priority sidewalk projects ..... 9

**Recommendations and Cost Opinions ..... 10**

    Figure 9 – Concrete deterioration on W Lincoln Street..... 10

    Figure 10 – W 15<sup>th</sup> Street east of N Lincoln Street..... 11

    Figure 11 – E 6<sup>th</sup> Street east of Fossil Street ..... 12

    Table 3 – Recommended street improvement projects ..... 13

    Figure 12 – Recommended projects for rehabilitation/reconstruction ..... 14

**Appendix – Street Condition Report..... 15**

# INTRODUCTION

The City of Russell initiated the Transportation Master Plan to prioritize and plan improvements to the city's transportation infrastructure. The City of Russell Transportation Master Plan looks to build upon the "2016 Comprehensive Development Plan for the Russell Area, Kansas: 2016-2036" to prioritize and budget for transportation projects. Although the Comprehensive Plan mentions all modes of transportation, the Transportation Master Plan will focus on the street and sidewalk network to serve automobile, pedestrian, and bicycle transportation as these are the three main components of transportation with the highest expected utilization within the City of Russell over the next 20 years.

The Master Plan prioritizes rehabilitation and maintenance projects based on the existing conditions of the street and sidewalk network. The plan also places a higher priority on snow routes and arterials over local and collector streets.



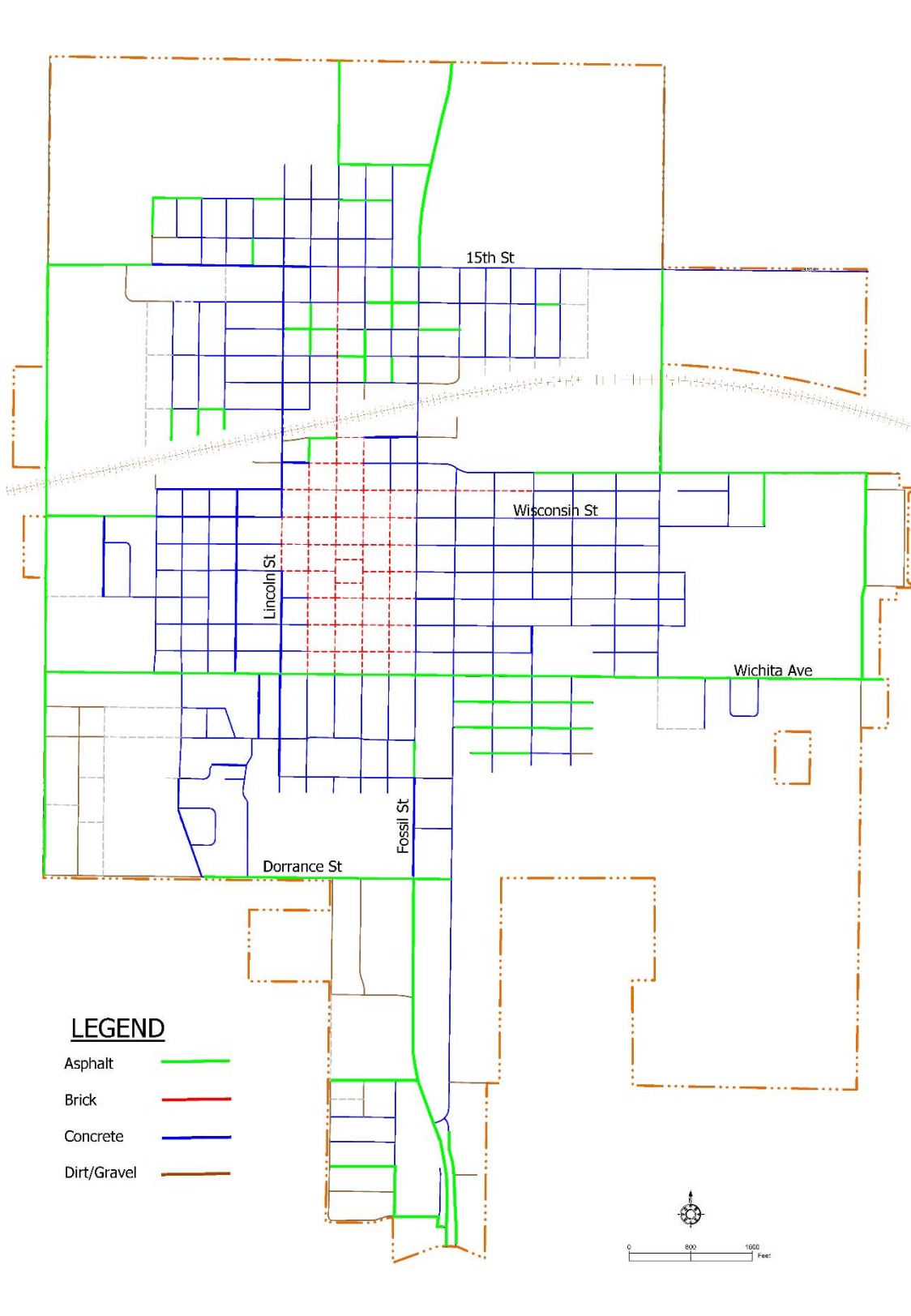
Figure 1: The Transportation Master Plan will plan and prioritize the rehabilitation or reconstruction of deteriorated streets throughout the city, such as W 7<sup>th</sup> Street east of N St. John Street.

## EXISTING CONDITIONS

The majority of the local street network is either concrete or brick streets. In 2014, the City of Russell Public Works staff performed a rating survey on the existing street network and classified them on a scale of 1-10 with 10 being a new street in excellent condition. The street report is included in the appendix of this report. In addition, Figure 3 on the following page shows a graphical representation of the street type and condition, listed as good, fair, or poor. Figure 4 also shows the condition rating on an aerial of the city and the location destination points and places of interest within the city.



Figure 2: The existing street network is comprised primarily of concrete and brick streets. Brick streets are more prevalent in the downtown area, such as the brick street at 8<sup>th</sup> & Maple Street.



### Street Types

Figure 3: Street material inventory map. (Source: City of Russell Public Works)

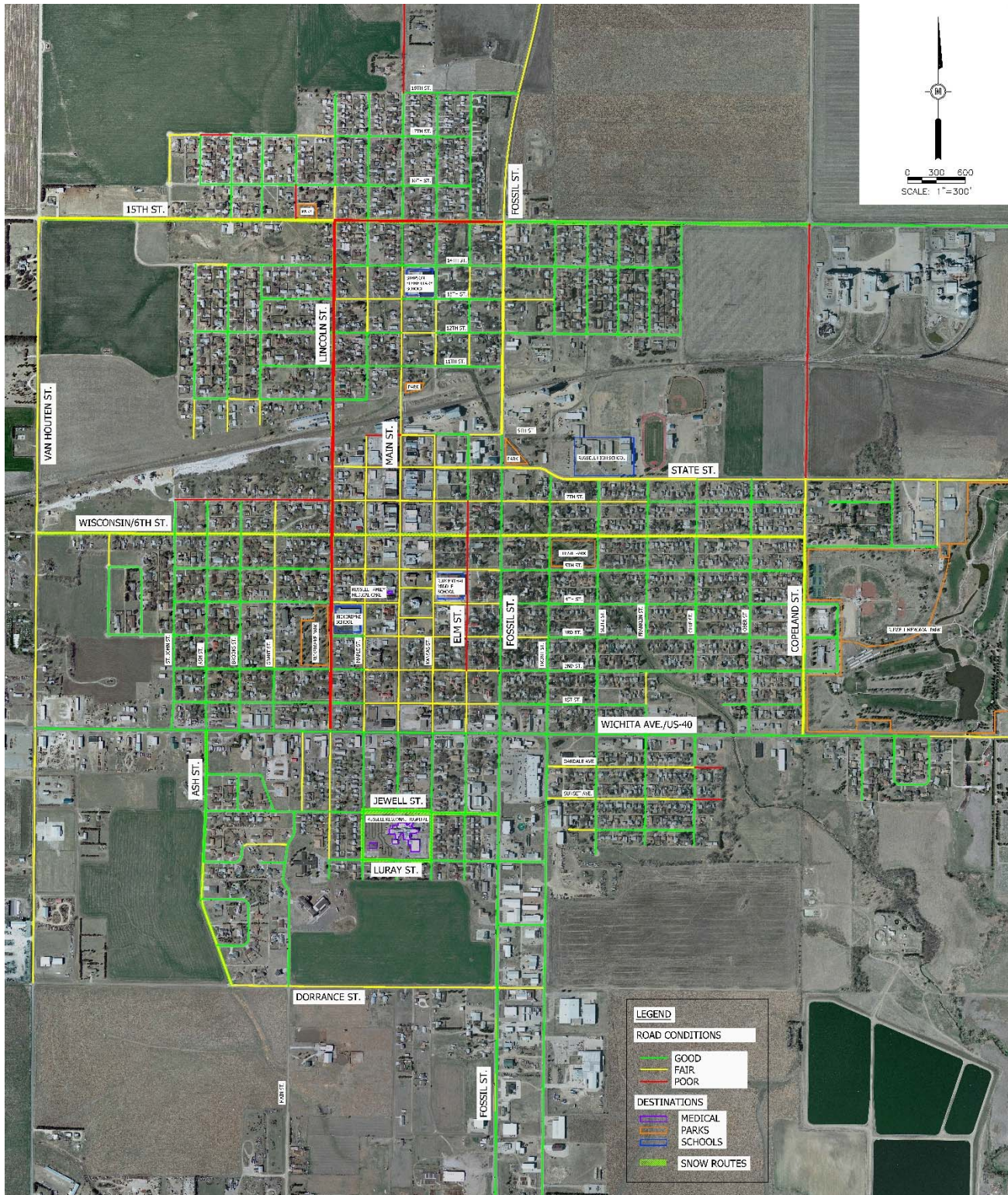


Figure 4: Aerial view of Russell showing the street network as either good, fair, or poor condition.

# SNOW ROUTES

During the development of the Transportation Master Plan, Public Works staff indicated the desire to have the designated emergency snow routes prioritized within the plan. The designed snow routes are show in Figure 5 below.

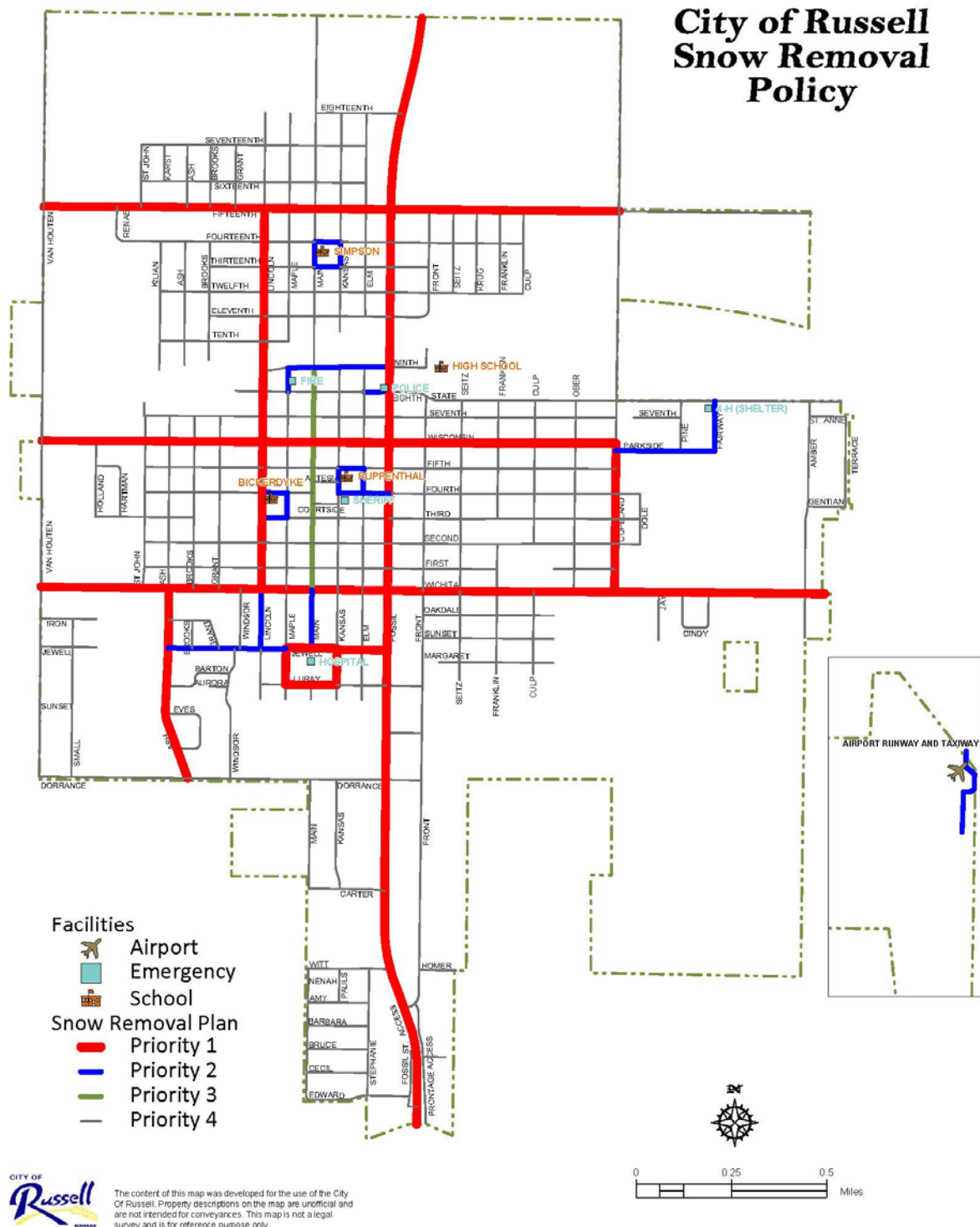


Figure 5: City of Russell Snow Route map. (Source: City of Russell)

Using the existing street condition database, the emergency snow route classification, and the street classifications, a list of priority projects was developed to assist the city in developing a capital improvement plan budget. The list of the priority projects is shown below in Table 1.

City of Russell - Priority Street Improvement Projects								
Street	From	To	Type (Existing/Proposed)	Method	Width (ft)	Length	Cost/LF	Cost
Lincoln St	Wichita Ave	15th St	Concrete/Concrete	Reconstruction	32	5300	\$600	\$3,180,000
15th St	Lincoln St	Fossil St	Concrete/Concrete	Reconstruction	32	1800	\$600	\$1,080,000
Wisconsin/6th	Van Houten St	Copeland St	Concrete/Concrete	Reconstruction	32	7960	\$600	\$4,776,000
Elm St	Wichita Ave	7th St	Brick/Concrete	Reconstruction	32	2400	\$600	\$1,440,000
Ash St	Barton St	Dorrance Ave	Concrete/Concrete	Reconstruction	32	1340	\$600	\$804,000
7th St	St. John St	Franklin St	Brick/Concrete	Reconstruction	32	4900	\$600	\$2,940,000
Main St	Wichita Ave	9th St	Brick/Concrete	Reconstruction	32	3240	\$600	\$1,944,000
State st	Fossil St	Copeland St	Concrete/Concrete	Reconstruction	32	3200	\$600	\$1,920,000
Wichita Ave	Van Houten St	Fossil St	Asphalt/Asphalt	Mill and Overlay	48	4800	\$115	\$552,000
Fossil st	Wichita Ave	15th St	Concrete/Concrete	Reconstruction	48	5300	\$1,000	\$5,300,000
Copeland St	Wichita Ave	State St	Concrete/Concrete	Reconstruction	32	2700	\$600	\$1,620,000
						8.1 miles		\$25,556,000

Table 1: Recommended street improvement projects and construction cost estimates for replacement.



Figure 6: Lincoln Street from Wichita Ave to 15<sup>th</sup> Street is listed as a high priority project.

## BICYCLE AND PEDESTRIAN NETWORK

The existing traffic conditions and grid layout of the street network within the City of Russell offer the opportunity to create an on-road bicycle network to connect places of interest within the city. The average daily traffic of all the local roads are well under 5,000 vehicles per day and the gridded layout provide opportunities for bicycle traffic to all parts of the city. There may be opportunities to create recreational trails within the city parks and connect these trails with the street network to further enhance the bicycle transportation network. In addition, bicycle route signs or bicycle wayfinding signs may be added throughout the city to provide guidance to bicycle riders to parks, schools, libraries, and other destination points. Consideration should also be given to widening existing streets when they are planned for reconstruction to provide room for both vehicle traffic and bicycle lanes.

Similarly to the roadway condition database, the City of Russell Public Works staff developed a database of the existing sidewalk conditions within the City. The sidewalks were rated as good, fair, or poor and are shown graphically on Figure 8. The City of Russell has a 50/50 sidewalk program and this program should be encouraged throughout the city to improve sidewalk conditions, promote active transportation, and allow the city to prioritize sidewalk or pedestrian enhancement dollars on recreational trails or filling in sidewalk gaps that exist throughout the city. Figure 8 shows a number of gaps in the existing sidewalk network and a list of those priority sidewalk projects are shown in Table 2.



Figure 7: Installing marked crosswalks across Fossil Street is a priority to provide east-west pedestrian connectivity.

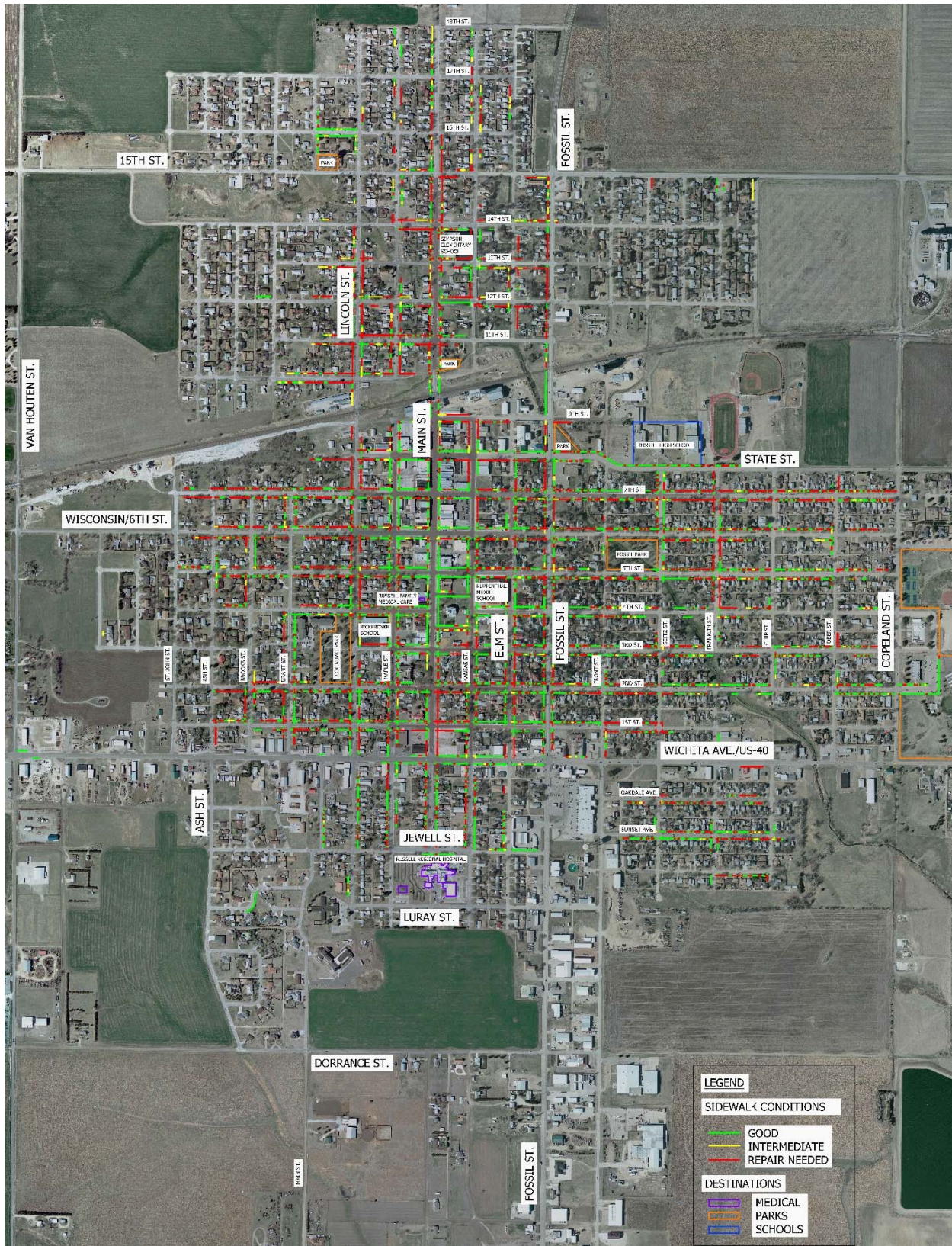


Figure 8: Existing sidewalk condition inventory map.

City of Russell - Priority Sidewalk Projects							
Street	From	To	Type	Width (ft)	Length (ft)	Cost/LF	Cost
Fossil St	Dorrance St	Witt St	Concrete	5	2020	\$30	\$60,600
Copeland St	Wichita Ave	State St	Concrete	5	2650	\$30	\$79,500
Wichita Ave	Fossil St	Copeland St	Concrete	5	3200	\$30	\$96,000
Wichita Ave	Van Houten St	Maple St	Concrete	5	3400	\$30	\$102,000
Jewell St	Ash St	Fossil St	Concrete	5	3000	\$30	\$90,000
Lurary St	Lincoln St	Front St	Concrete	5	2250	\$30	\$67,500
Dorrance St	Ash St	Front St	Concrete	5	3200	\$30	\$96,000
Ash St	Dorrance St	7th St	Concrete	5	5060	\$30	\$151,800
St John St	Wichita Ave	7th St	Concrete	5	2360	\$30	\$70,800
1st St	St. John St	Ash St	Concrete	5	350	\$30	\$10,500
2nd St	St. John St	Brooks St	Concrete	5	700	\$30	\$21,000
3rd St	St. John St	Grant St	Concrete	5	1040	\$30	\$31,200
4th St	St. John St	Grant St	Concrete	5	1040	\$30	\$31,200
Front St	Wichita Ave	9th St	Concrete	5	8900	\$30	\$267,000
Ober St	Wichita Ave	State St	Concrete	5	2650	\$30	\$79,500
Culp St	2nd St	State St	Concrete	5	2000	\$30	\$60,000
State St	Seitz St	Copeland St	Concrete	5	2150	\$30	\$64,500
Seitz St	Wichita Ave	5th St	Concrete	5	1700	\$30	\$51,000
10th St	St. John St	Brooks St	Concrete	5	840	\$30	\$25,200
11th St	Brooks St	Lincoln St	Concrete	5	740	\$30	\$22,200
12th St	St. John St	Lincoln St	Concrete	5	840	\$30	\$25,200
12th St	Fossil St	Culp St	Concrete	5	1840	\$30	\$55,200
13th St	Brooks St	Main St	Concrete	5	1450	\$30	\$43,500
14th St	St. John St	Maple St	Concrete	5	2000	\$30	\$60,000
14th St	Fossil St	Culp St	Concrete	5	1830	\$30	\$54,900
Kilian St	10th St	14th St	Concrete	5	1400	\$30	\$42,000
Ash St	10th St	14th St	Concrete	5	1400	\$30	\$42,000
Brooks St	10th St	14th St	Concrete	5	1400	\$30	\$42,000
15th St	St. John St	Culp St	Concrete	5	5300	\$30	\$159,000
16th St	St. John St	Elm St	Concrete	5	3100	\$30	\$93,000
17th St	St. John St	Elm St	Concrete	5	3100	\$30	\$93,000
Elm St	14th St	18th St	Concrete	5	1800	\$30	\$54,000
Front St	12th St	15th St	Concrete	5	1200	\$30	\$36,000
							\$2,277,300

Table 2: Priority sidewalk projects.

## RECOMMENDATIONS AND COST OPINIONS

The existing conditions database, the street classifications, and the snow route classifications were used to prioritize the projects for funding. The top three priority projects for the City of Russell are as follows:

### *Lincoln St. – Wichita Ave. to 15<sup>th</sup> St.*

This segment of Lincoln Street is a concrete street with curb and gutter and is in poor condition. It is one of four collectors that connects north Russell from south Russell across the Union Pacific railroad tracks. Lincoln Street is also designated as an emergency snow route. Sidewalk is continuous along the west side of the street, but it is rated in poor condition for a majority of the length. It is recommended that Lincoln Street be reconstructed with a new sidewalk along either the east or the west side. The estimated construction cost for concrete reconstruction of Lincoln Street from Wichita Avenue to 15<sup>th</sup> Street is \$3,180,000.



Figure 9: Image showing existing concrete deterioration on Lincoln St.

### 15<sup>th</sup> St. – Lincoln St. to Fossil St.

15<sup>th</sup> Street is an emergency snow route that provides connectivity between Lincoln Street and Fossil Street. This stretch of 15<sup>th</sup> Street currently only has sidewalk from Maple Street to Fossil Street, so sidewalk should be included with the road project from Lincoln Street to Maple Street. The estimated construction cost for concrete reconstruction of 15<sup>th</sup> Street from Lincoln Street to Fossil Street is \$1,080,000.



Figure 10: 15th Street east of Lincoln Street.

### *Wisconsin/6<sup>th</sup> St. – Van Houten St. to Copeland St.*

Wisconsin Street west of Fossil Street and 6<sup>th</sup> Street east of Fossil Street is another emergency snow route in fair condition that should be reconstructed when funding is available. Wisconsin/6<sup>th</sup> Street is the other major east/west route besides Wichita Ave through the city. There are existing sidewalks on both sides of the road for a majority of the length, but they are primarily rated in poor condition. Consideration should be given to replacing the sidewalks when Wisconsin/6<sup>th</sup> Street is reconstructed.



Figure 11: 6th Street just east of Fossil Street.

### Priority Projects

In addition to the three priority projects mentioned above, Table 3 and Figure 12 below shows the remaining projects that should be considered for rehabilitation or reconstruction when funding becomes available.

City of Russell - Priority Street Improvement Projects								
Street	From	To	Type (Existing/Proposed)	Method	Width (ft)	Length	Cost/LF	Cost
Lincoln St	Wichita Ave	15th St	Concrete/Concrete	Reconstruction	32	5300	\$600	\$3,180,000
15th St	Lincoln St	Fossil St	Concrete/Concrete	Reconstruction	32	1800	\$600	\$1,080,000
Wisconsin/6th	Van Houten St	Copeland St	Concrete/Concrete	Reconstruction	32	7960	\$600	\$4,776,000
Elm St	Wichita Ave	7th St	Brick/Concrete	Reconstruction	32	2400	\$600	\$1,440,000
Ash St	Barton St	Dorrance Ave	Concrete/Concrete	Reconstruction	32	1340	\$600	\$804,000
7th St	St. John St	Franklin St	Brick/Concrete	Reconstruction	32	4900	\$600	\$2,940,000
Main St	Wichita Ave	9th St	Brick/Concrete	Reconstruction	32	3240	\$600	\$1,944,000
State st	Fossil St	Copeland St	Concrete/Concrete	Reconstruction	32	3200	\$600	\$1,920,000
Wichita Ave	Van Houten St	Fossil St	Asphalt/Asphalt	Mill and Overlay	48	4800	\$115	\$552,000
Fossil st	Wichita Ave	15th St	Concrete/Concrete	Reconstruction	48	5300	\$1,000	\$5,300,000
Copeland St	Wichita Ave	State St	Concrete/Concrete	Reconstruction	32	2700	\$600	\$1,620,000
						8.1 miles		\$25,556,000

Table 3: Recommended street improvement projects

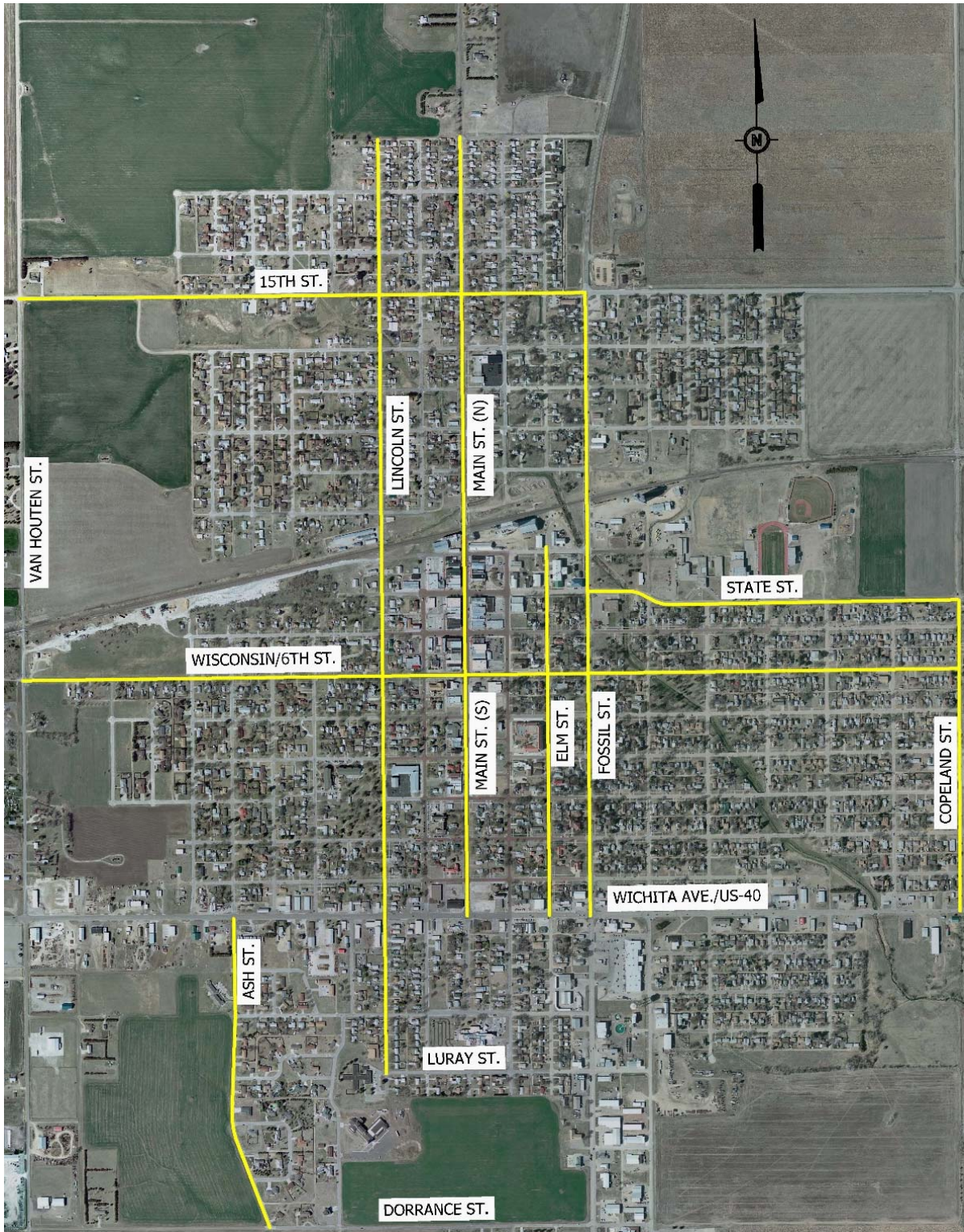


Figure 12: Recommended projects for rehabilitation/reconstruction in Russell.

# APPENDIX – STREET CONDITION REPORT

## DEFINITION OF CATEGORIES

STREET ID: UNIQUE NAME FOR EACH STREET SEGMENT PER ADDRESS BLOCK

STREET NAME: PLATTED STREET NAME

SURFACE: TYPE OF SURFACE  
ASPHALT, BRICK, CONCRETE, DIRT, AND SAND

CONDITION: RANKED BY CONDITION OF STREET SURFACE  
RANK 1 = POOR  
RANK 5 = FAIR  
RANK 7 = GOOD  
RANK 10 = NEW

CURB EVEN: TYPE OF CURB ON SOUTH AND WEST SIDE OF THE BLOCK

CURB ODD: TYPE OF CURB ON NORTH AND EAST SIDE OF THE BLOCK

LIST OF CURB TYPES:

- 1) S-CG = STANDUP CURB AND GUTTER
- 2) LB-CG = LAIDBACK CURB AND GUTTER
- 3) S-MONO = STANDUP MONOLITHIC
- 4) LB-MONO = LAIDBACK MONOLITHIC

LENGTH (FT): LENGTH OF STREET SEGMENT (CENTER OF INTERSECTION)

R-O-W: RIGHT-OF-WAY

COST(\$ per ft): CONCRETE AND ASPHALT = LENGTH X \$105.00 FOR CONCRETE REPLACEMENT

- LABOR NOT INCLUDED SAND AND DIRT = LENGTH X \$47 FOR SAND REPLACEMENT

BRICK = LENGTH X \$321.00 FOR BRICK REPLACEMENT FOR 26' WIDTH ST

BRICK = LENGTH X \$537.00 FOR BRICK REPLACEMENT FOR 52' WIDTH ST

- THIS FORMULA WITH 52' WIDTH ST WAS USED FOR WISCONSIN, 7TH, 8TH, 9TH AND MAIN - WIDTH MAY VARY SO THIS IS ONLY AN ESTIMATE

## STREET BOOK REPORT

STREET ID	ST NAME	SURFACE	CONDITION	CURB EVEN	CURB ODD	LENGTH (FT)	R-O-W	COST OF MATERIALS
C3-01	184TH	SAND		NO CURB	NO CURB	2,683.5	60	\$126,124.85
C3-02	VAN HOUTEN	ASPHALT	5	NO CURB	NO CURB	1,050.3	60	\$110,286.35
C3-03	15TH	ASPHALT	5	NO CURB	NO CURB	1,350.6	66	\$141,812.75
C3-04	17TH	ASPHALT	6	S-CG	NO CURB	318.5	60	\$33,444.85
C3-05	17TH	ASPHALT	4	S-CG	NO CURB	319.4	60	\$33,536.04
C3-06	17TH	CONCRETE	8	S-MONO	S-MONO	321.5	60	\$33,756.37
C3-07	17TH	CONCRETE	8	S-MONO	S-MONO	350.0	60	\$36,750.25
C3-08	17TH	ASPHALT	6	NO CURB	NO CURB	402.7	60	\$42,280.00
C3-09	LINCOLN	CONCRETE	8	S-GC	S-GC	450.6	60	\$47,315.66
C3-10	ST JOHN	ASPHALT	6	NO CURB	S-CG	510.7	60	\$53,621.54
C3-11	KARST	CONCRETE	8	S-MONO	S-MONO	507.9	60	\$53,330.79
C3-12	ASH	CONCRETE	8	S-MONO	S-MONO	509.3	60	\$53,481.43
C3-13	BROOKS	CONCRETE	8	S-MONO	S-MONO	508.3	60	\$53,369.58
C3-14	GRANT	CONCRETE	8	S-MONO	S-MONO	510.6	60	\$53,613.04
C3-15	LINCOLN	CONCRETE	8	S-CG	S-CG	507.9	60	\$53,328.37
C3-16	ST JOHN	SAND		NO CURB	NO CURB	354.9	60	\$16,678.14

STREET ID	ST NAME	SURFACE	CONDITION	CURB EVEN	CURB ODD	LENGTH (FT)	R-O-W	COST OF MATERIALS
C3-17	16TH	SAND		NO CURB	NO CURB	320.8	60	\$15,076.74
C3-18	16TH	CONCRETE	8	S-MONO	S-MONO	321.0	60	\$33,703.69
C3-19	16TH	CONCRETE	8	S-MONO	S-MONO	319.9	60	\$33,587.58
C3-20	16TH	CONCRETE	8	S-MONO	S-MONO	349.8	60	\$36,730.14
C3-21	16TH	CONCRETE	8	S-CG	S-CG	403.5	60	\$42,367.38
C3-22	16TH	CONCRETE	8	S-CG	S-CG	345.8	60	\$36,311.96
C3-23	ASH	CONCRETE	8	S-MONO	S-MONO	358.7	60	\$37,658.46
C3-24	BROOKS	CONCRETE	8	S-MONO	S-MONO	358.7	60	\$37,658.39
C3-25	GRANT	ASPHALT	4	NO CURB	NO CURB	363.9	60	\$38,206.90
C3-26	LINCOLN	CONCRETE	5	S-CG	S-CG	362.4	60	\$38,056.48
C3-27	15TH	CONCRETE	5	S-MONO	S-MONO	638.2	66	\$67,008.81
C3-28	15TH	CONCRETE	5	S-MONO	S-CG	320.3	66	\$33,636.15
C3-29	15TH	CONCRETE	5	S-MONO	S-CG	349.7	66	\$36,715.36
C3-30	15TH	CONCRETE	5	S-MONO	S-MONO	403.7	66	\$42,387.68
C3-31	15TH	CONCRETE	3	S-CG	S-CG	345.1	66	\$36,235.87
C3-32	RENAE	SAND		NO CURB	NO CURB	367.7	60	\$17,283.52
C3-33	BROOKS			NO STREET	NO STREET	0.0	0	
C3-34	LINCOLN	CONCRETE	2	S-CG	S-CG	464.4	83	\$48,765.61
C3-35	14TH	SAND		NO CURB	NO CURB	678.4	83	\$31,885.13
C3-36	14TH	CONCRETE	5	LB-CG	S-MONO	338.3	83	\$35,519.98
C3-37	14TH	CONCRETE	8	LB-CG	S-MONO	341.8	83	\$35,893.58
C3-38	14TH	CONCRETE	8	S-CG	S-CG	754.3	83	\$79,197.32
C3-39	14TH	CONCRETE	7	S-MONO	S-MONO	344.0	83	\$36,121.87
C3-40	17TH	CONCRETE	8	S-CG	S-CG	346.4	60	\$36,371.40
C4-01	ST JOHN			NO STREET	NO STREET	0.0	60	
C4-02	KILIAN	CONCRETE	8	LB-MONO	LB-MONO	692.7	60	\$72,738.26
C4-03	ASH	CONCRETE	8	LB-MONO	LB-MONO	692.5	60	\$72,715.19
C4-04	BROOKS	CONCRETE	8	LB-MONO	S-CG	347.3	60	\$36,461.90
C4-05	BROOKS	CONCRETE	8	LB-MONO	S-CG	346.7	60	\$36,400.78
C4-06	13TH	CONCRETE	8	S-CG	S-CG	755.9	83	\$79,374.24
C4-07	13TH	ASPHALT	6	NO CURB	NO CURB	344.7	83	\$36,191.28
C4-08	LINCOLN	CONCRETE	2	S-CG	S-CG	346.9	83	\$36,428.26
C4-09	LINCOLN	CONCRETE	2	S-CG	S-CG	347.7	83	\$36,508.64
C4-10	12TH			NO STREET	NO STREET	0.0	83	
C4-11	12TH	CONCRETE	8	LB-MONO	LB-MONO	340.1	83	\$35,707.62
C4-12	12TH	CONCRETE	8	LB-MONO	LB-MONO	340.4	83	\$35,742.12
C4-13	12TH	CONCRETE	8	S-CG	S-CG	756.0	83	\$79,375.48
C4-14	12TH	CONCRETE	8	S-CG	S-CG	347.4	83	\$36,480.10
C4-15	KILIAN	CONCRETE	8	LB-MONO	LB-MONO	694.8	60	\$72,958.12
C4-16	ASH	CONCRETE	8	LB-MONO	LB-MONO	693.7	60	\$72,835.97
C4-17	BROOKS	CONCRETE	8	LB-MONO	S-CG	349.2	60	\$36,669.90
C4-18	BROOKS	CONCRETE	8	LB-MONO	S-CG	344.3	60	\$36,150.46
C4-19	11TH	CONCRETE	8	S-CG	S-CG	757.6	83	\$79,551.68
C4-20	11TH	CONCRETE	8	S-CG	S-CG	345.1	83	\$36,238.64

STREET ID	ST NAME	SURFACE	CONDITION	CURB EVEN	CURB ODD	LENGTH (FT)	R-O-W	COST OF MATERIALS
C4-21	LINCOLN	CONCRETE	2	S-CG	S-CG	347.2	83	\$36,454.75
C4-22	LINCOLN	CONCRETE	2	S-CG	S-CG	346.3	83	\$36,363.96
C4-23	10TH			NO STREET	NO STREET	0.0	83	
C4-24	10TH	CONCRETE	8	LB-MONO	LB-MONO	340.8	83	\$35,780.79
C4-25	10TH	ASPHALT	5	LB-MONO	LB-MONO	339.4	83	\$35,637.20
C4-26	10TH	CONCRETE	7	S-CG	S-CG	758.5	83	\$79,647.55
C4-27	10TH	CONCRETE	8	S-CG	S-CG	345.3	83	\$36,259.25
C4-28	KILIAN	ASPHALT	5	NO CURB	NO CURB	410.4	60	\$43,087.29
C4-29	ASH	ASPHALT	5	NO CURB	NO CURB	334.0	60	\$35,068.01
C4-30	BROOKS	ASPHALT	6	NO CURB	NO CURB	257.9	60	\$27,076.09
C4-31	LINCOLN	CONCRETE	5	S-CG	S-CG	305.1	83	\$32,036.97
C4-32	LINCOLN	CONCRETE	2	S-CG	S-CG	387.4	83	\$40,675.38
C4-33	9TH	SAND		NO CURB	NO CURB	347.8	83	\$16,346.20
C4-34	8TH	SAND		NO CURB	NO CURB	384.9	83	\$18,091.56
C4-35	8TH	CONCRETE	6	S-CG	S-CG	346.2	83	\$36,347.04
C4-36	VAN HOUTEN	ASPHALT	5	NO CURB	NO CURB	1,607.7	60	\$168,803.73
C5-01	ST JOHN	SAND		NO CURB	NO CURB	198.6	60	\$9,336.09
C5-02	7TH	CONCRETE	3	S-CG	S-CG	334.7	83	\$35,141.83
C5-03	7TH	CONCRETE	3	S-CG	S-CG	346.9	83	\$36,421.86
C5-04	7TH	CONCRETE	3	S-CG	S-CG	355.7	83	\$37,350.12
C5-05	7TH	CONCRETE	3	S-CG	S-CG	589.8	83	\$61,933.31
C5-06	7TH	BRICK	5	S-CG	S-CG	346.4	83	\$185,996.42
C5-07	LINCOLN	CONCRETE	2	S-CG	S-CG	347.1	83	\$36,449.68
C5-08	VAN HOUTEN	ASPHALT	5	NO CURB	NO CURB	172.0	60	\$18,064.51
C5-09	VAN HOUTEN	ASPHALT	5	NO CURB	NO CURB	422.0	60	\$44,305.46
C5-10	VAN HOUTEN	ASPHALT	5	NO CURB	NO CURB	802.7	60	\$84,284.94
C5-11	WISCONSIN	ASPHALT	5	NO CURB	NO CURB	753.5	99	\$79,118.08
C5-12	WISCONSIN	ASPHALT	5	NO CURB	NO CURB	679.9	99	\$71,389.24
C5-13	ST JOHN	CONCRETE	7	S-CG	S-CG	349.6	60	\$36,711.60
C5-14	ASH	CONCRETE	7	S-MONO	S-CG	351.8	83	\$36,943.73
C5-15	BROOKS	CONCRETE	7	S-MONO	S-CG	352.6	83	\$37,023.75
C5-16	GRANT	CONCRETE	6	S-CG	S-CG	353.6	99	\$37,130.95
C5-17	LINCOLN	CONCRETE	2	S-CG	S-CG	355.3	83	\$37,303.82
C5-18	WISCONSIN	CONCRETE	5	S-CG	S-CG	335.0	99	\$35,171.99
C5-19	WISCONSIN	CONCRETE	5	S-CG	S-CG	347.1	99	\$36,442.63
C5-20	WISCONSIN	CONCRETE	5	S-CG	S-CG	353.9	99	\$37,158.15
C5-21	WISCONSIN	CONCRETE	5	S-CG	S-CG	591.4	99	\$62,095.86
C5-22	WISCONSIN	BRICK	5	S-CG	S-CG	345.9	99	\$185,740.56
C5-23	CARLTON			NO STREET	NO STREET	0.0	60	
C5-24	3RD			NO STREET	NO STREET	0.0	60	
C5-25	HOLLAND	CONCRETE	8	S-MONO	S-MONO	702.6	60	\$73,772.28
C5-26	HOLLAND	CONCRETE	6	NO CURB	NO CURB	346.4	60	\$36,370.94
C5-27	HARTMAN	CONCRETE	8	S-CG	S-CG	1,015.2	60	\$106,594.72
C5-28	3RD	CONCRETE	8	S-MONO	S-MONO	680.1	83	\$71,406.22

STREET ID	ST NAME	SURFACE	CONDITION	CURB EVEN	CURB ODD	LENGTH (FT)	R-O-W	COST OF MATERIALS
C5-29	ST JOHN	CONCRETE	8	S-MONO	S-MONO	346.4	60	\$36,376.09
C5-30	ST JOHN	CONCRETE	8	S-CG	S-CG	347.1	60	\$36,441.67
C5-31	ST JOHN	CONCRETE	8	S-MONO	S-CG	345.3	60	\$36,256.50
C5-32	ST JOHN	CONCRETE	8	S-CG	S-CG	358.1	60	\$37,602.91
C5-33	ASH	CONCRETE	8	S-MONO	S-CG	356.6	83	\$37,442.52
C5-34	BROOKS	CONCRETE	8	S-CG	S-CG	355.6	83	\$37,332.83
C5-35	GRANT	CONCRETE	6	S-MONO	S-MONO	355.3	99	\$37,305.07
C5-36	LINCOLN	BRICK	2	S-CG	S-CG	354.5	83	\$113,804.55
C5-37	5TH	CONCRETE	8	S-CG	S-CG	334.8	83	\$35,153.84
C5-38	5TH	CONCRETE	8	S-CG	S-CG	347.0	83	\$36,434.59
C5-39	5TH	CONCRETE	8	S-CG	S-CG	353.8	83	\$37,145.10
C5-40	5TH	CONCRETE	8	S-CG	S-CG	590.8	83	\$62,031.94
C5-41	5TH	BRICK	5	S-CG	S-CG	346.8	83	\$111,331.16
C5-42	ASH	CONCRETE	8	S-MONO	S-CG	346.9	83	\$36,425.01
C5-43	BROOKS	CONCRETE	8	S-CG	S-CG	346.8	83	\$36,410.93
C5-44	GRANT	CONCRETE	6	S-MONO	S-MONO	341.4	99	\$35,852.02
C5-45	LINCOLN	BRICK	2	S-CG	S-CG	347.2	83	\$111,449.95
C5-46	4TH	CONCRETE	8	S-CG	S-MONO	336.9	83	\$35,369.46
C5-47	4TH	CONCRETE	8	S-CG	S-MONO	346.8	83	\$36,416.31
C5-48	4TH	CONCRETE	8	S-CG	S-MONO	353.6	83	\$37,129.46
C5-49	4TH	CONCRETE	7	S-CG	S-CG	590.9	83	\$62,048.69
C5-50	4TH	BRICK	5	S-CG	S-CG	346.5	83	\$111,238.89
C5-51	ASH	CONCRETE	8	S-MONO	S-MONO	348.2	83	\$36,559.05
C5-52	BROOKS	CONCRETE	8	S-CG	S-CG	347.6	83	\$36,496.33
C5-53	GRANT	CONCRETE	6	S-MONO	S-MONO	697.5	99	\$73,241.50
C5-54	LINCOLN	CONCRETE	2	S-CG	S-CG	346.6	83	\$36,388.45
C5-55	3RD	CONCRETE	8	S-CG	S-CG	335.1	83	\$35,190.67
C5-56	3RD	CONCRETE	8	S-MONO	S-MONO	347.2	83	\$36,451.13
C5-57	3RD	CONCRETE	7	S-CG	S-CG	346.8	83	\$36,417.57
C5-58	ASH	CONCRETE	8	S-MONO	S-CG	346.1	83	\$36,343.05
C5-59	BROOKS	CONCRETE	8	S-CG	S-CG	346.3	83	\$36,364.78
C5-60	LINCOLN	CONCRETE	2	S-CG	S-CG	346.0	83	\$36,333.40
C5-61	VAN HOUTEN	ASPHALT	5	NO CURB	NO CURB	250.3	60	\$26,279.55
C6-01	VAN HOUTEN	ASPHALT	5	NO CURB	NO CURB	971.9	60	\$102,051.59
C6-02	2ND	CONCRETE	8	S-CG	S-CG	334.9	83	\$35,164.21
C6-03	2ND	CONCRETE	8	S-CG	S-CG	346.4	83	\$36,367.18
C6-04	2ND	CONCRETE	8	S-CG	S-CG	355.3	83	\$37,306.35
C6-05	2ND	CONCRETE	7	S-CG	S-CG	590.7	83	\$62,024.54
C6-06	2ND	CONCRETE	8	S-CG	S-CG	345.4	83	\$36,271.33
C6-07	ST JOHN	CONCRETE	8	S-MONO	S-MONO	346.6	60	\$36,392.16
C6-08	ASH	CONCRETE	8	S-CG	S-CG	344.8	83	\$36,202.80
C6-09	BROOKS	CONCRETE	8	S-CG	S-CG	345.5	83	\$36,281.30
C6-10	GRANT	CONCRETE	7	S-CG	S-CG	346.3	99	\$36,361.38
C6-11	LINCOLN	CONCRETE	2	S-CG	S-CG	345.8	83	\$36,307.64

STREET ID	ST NAME	SURFACE	CONDITION	CURB EVEN	CURB ODD	LENGTH (FT)	R-O-W	COST OF MATERIALS
C6-12	1ST	CONCRETE	8	S-MONO	S-MONO	333.1	83	\$34,971.35
C6-13	1ST	CONCRETE	8	S-CG	S-CG	348.4	83	\$36,581.67
C6-14	1ST	CONCRETE	8	S-CG	S-CG	354.5	83	\$37,222.28
C6-15	1ST	CONCRETE	7	S-CG	S-CG	589.7	83	\$61,919.65
C6-16	1ST	CONCRETE	7	S-CG	S-CG	346.1	83	\$36,340.02
C6-17	ST JOHN	CONCRETE	8	S-CG	LB-CG	288.5	60	\$30,297.46
C6-18	ASH	CONCRETE	7	S-MONO	S-MONO	289.9	83	\$30,443.93
C6-19	BROOKS	CONCRETE	8	S-CG	S-CG	292.2	83	\$30,681.74
C6-20	GRANT	CONCRETE	7	S-CG	S-CG	295.5	99	\$31,031.92
C6-21	LINCOLN	CONCRETE	2	S-CG	S-CG	298.5	83	\$31,340.47
C6-22	WICHITA	ASPHALT	7	S-CG	S-CG	736.1	70	\$77,293.03
C6-23	WICHITA	ASPHALT	7	S-CG	S-CG	310.0	70	\$32,545.81
C6-24	WICHITA	ASPHALT	7	S-CG	S-CG	366.1	70	\$38,438.63
C6-25	WICHITA	ASPHALT	7	S-CG	S-CG	362.0	70	\$38,011.64
C6-26	WICHITA	ASPHALT	7	S-CG	S-CG	339.8	70	\$35,682.96
C6-27	WICHITA	ASPHALT	7	S-CG	S-CG	353.0	70	\$37,064.10
C6-28	WICHITA	ASPHALT	7	S-CG	S-CG	591.6	70	\$62,118.77
C6-29	WICHITA	ASPHALT	7	S-CG	S-CG	346.9	70	\$36,427.78
C6-30	VAN HOUTEN	ASPHALT	5	NO CURB	NO CURB	452.0	60	\$47,460.16
C6-31	ASH	CONCRETE	7	LB-MONO	LB-MONO	452.5	60	\$47,515.71
C6-32	WINDSOR	CONCRETE	6	LB-CG	S-CG	838.3	42	\$88,017.28
C6-33	LINCOLN	CONCRETE	6	S-CG	S-CG	837.6	83	\$87,949.37
C6-34	IRON	SAND		NO CURB	NO CURB	445.9	60	\$20,956.81
C6-35	IRON	SAND		NO CURB	NO CURB	330.0	60	\$15,511.77
C6-36	IRON			NO STREET	NO STREET	0.0	60	
C6-37	IRON	CONCRETE	8	LB-MONO	LB-MONO	329.8	60	\$34,628.57
C6-38	IRON	CONCRETE	8	LB-MONO	LB-MONO	236.2	60	\$24,806.19
C6-39	VAN HOUTEN	ASPHALT	5	NO CURB	NO CURB	387.5	60	\$40,689.96
C6-40	SMALL	SAND		NO CURB	NO CURB	386.7	60	\$18,172.57
C6-41	CURTIS			NO STREET	NO STREET	0.0	60	
C6-42	ASH	CONCRETE	7	LB-MONO	LB-MONO	387.3	60	\$40,665.05
C6-43	BROOKS	CONCRETE	8	LB-MONO	LB-MONO	386.2	60	\$40,553.69
C6-44	GRANT	CONCRETE	8	LB-MONO	LB-MONO	409.6	60	\$43,004.61
C6-45	JEWELL	SAND		NO CURB	NO CURB	446.0	60	\$20,961.85
C6-46	JEWELL	SAND		NO CURB	NO CURB	328.6	60	\$15,443.97
C6-47	JEWELL			NO STREET	NO STREET	0.0	60	
C6-48	JEWELL	CONCRETE	7	S-CG	S-CG	329.2	60	\$34,569.47
C6-49	JEWELL	CONCRETE	7	S-CG	S-CG	374.4	60	\$39,310.94
C6-50	JEWELL	CONCRETE	8	S-CG	S-CG	577.0	60	\$60,588.65
C6-51	JEWELL	CONCRETE	8	S-CG	S-CG	350.8	60	\$36,830.31
C6-52	VAN HOUTEN	ASPHALT	5	NO CURB	NO CURB	888.5	60	\$93,290.76
C6-53	SMALL	SAND		NO CURB	NO CURB	529.4	60	\$24,879.79
C6-54	CURTIS			NO STREET	NO STREET	0.0	60	
C6-55	ASH	CONCRETE	7	S-CG	S-CG	526.9	60	\$55,324.54

STREET ID	ST NAME	SURFACE	CONDITION	CURB EVEN	CURB ODD	LENGTH (FT)	R-O-W	COST OF MATERIALS
C6-56	WINDSOR	CONCRETE	7	LB-MONO	S-MONO	359.7	60	\$37,767.10
C6-57	BARTON	CONCRETE	6	LB-MONO	LB-MONO	468.0	60	\$49,143.76
C6-58	LINCOLN	CONCRETE	6	S-CG	S-CG	492.8	83	\$51,746.93
C7-01	VAN HOUTEN	ASPHALT	5	NO CURB	NO CURB	910.6	60	\$95,612.52
C7-02	SMALL	SAND		NO CURB	NO CURB	912.8	60	\$42,899.64
C7-03	SUNSET			NO STREET	NO STREET	0.0	60	
C7-04	SMALL	SAND		NO CURB	NO CURB	360.0	60	\$16,920.00
C7-05	BARTON			NO STREET	NO STREET	0.0	60	
C7-06	DAWN			NO STREET	NO STREET	0.0	60	
C7-07	CURTIS			NO STREET	NO STREET	0.0	60	
C7-08	CURTIS			NO STREET	NO STREET	0.0	60	
C7-09	DORRANCE	SAND		NO CURB	NO CURB	446.0	60	\$20,962.33
C7-10	DORRANCE	SAND		NO CURB	NO CURB	330.1	60	\$15,512.77
C7-11	DORRANCE	SAND		NO CURB	NO CURB	1,283.6	60	\$60,329.78
C7-12	DORRANCE	ASPHALT	5	NO CURB	S-CG	588.7	60	\$61,818.72
C7-13	ASH	CONCRETE	5	S-MONO	S-MONO	945.2	60	\$99,248.37
C7-14	ASH	CONCRETE	5	S-MONO	S-MONO	385.2	60	\$40,443.87
C7-15	BARTON			NO STREET	NO STREET	0.0	60	
C7-16	BARTON	CONCRETE	7	LB-MONO	LB-MONO	527.8	60	\$55,420.91
C7-17	EVES	CONCRETE	8	LB-MONO	LB-MONO	1,216.7	60	\$127,751.32
C7-18	AURORA	CONCRETE	8	LB-MONO	LB-MONO	250.2	60	\$26,275.15
C7-19	WINDSOR	CONCRETE	7	S-MONO	S-MONO	352.4	60	\$36,998.20
C7-20	WINDSOR	CONCRETE	7	S-MONO	S-MONO	1,126.1	60	\$118,237.23
C7-21	LINCOLN	CONCRETE	8	S-CG	S-CG	196.7	83	\$20,649.06
C7-22	LURAY	CONCRETE	8	S-CG	S-CG	346.7	60	\$36,405.31
C7-23	MAPLE	CONCRETE	8	S-CG	S-CG	200.5	83	\$21,049.39
C7-24	DORRANCE	ASPHALT	5	NO CURB	NO CURB	1,109.7	60	\$116,517.12
D2-01	MAIN	ASPHALT	4	NO CURB	NO CURB	1,335.5	70	\$140,229.72
D2-02	FOSSIL	ASPHALT	5	NO CURB	NO CURB	1,349.1	10	\$141,654.64
D3-01	18TH	ASPHALT	7	NO CURB	NO CURB	353.9	60	\$37,155.90
D3-02	18TH	ASPHALT	7	NO CURB	NO CURB	346.1	60	\$36,339.01
D3-03	18TH	ASPHALT	7	NO CURB	NO CURB	491.2	60	\$51,580.77
D3-04	MAPLE	CONCRETE	8	S-CG	S-CG	443.9	60	\$46,604.59
D3-05	MAIN	CONCRETE	8	S-CG	S-CG	451.6	99	\$47,422.26
D3-06	KANSAS	CONCRETE	8	S-CG	S-CG	455.4	83	\$47,815.71
D3-07	ELM	CONCRETE	8	S-CG	S-CG	455.8	83	\$47,863.88
D3-08	FOSSIL	ASPHALT	6			1,337.0	10	\$140,379.78
D3-09	17TH	CONCRETE	8	S-CG	S-CG	355.7	60	\$37,351.98
D3-10	17TH	ASPHALT	8	S-CG	S-CG	354.3	60	\$37,200.02
D3-11	17TH	ASPHALT	8	S-CG	S-CG	346.5	60	\$36,379.49
D3-12	MAPLE	CONCRETE	8	S-CG	S-CG	508.9	60	\$53,439.36
D3-13	MAIN	CONCRETE	8	S-CG	S-CG	509.5	99	\$53,497.30
D3-14	KANSAS	CONCRETE	8	S-CG	S-CG	509.9	83	\$53,542.88
D3-15	ELM	CONCRETE	8	S-CG	S-CG	509.4	83	\$53,488.96

STREET ID	ST NAME	SURFACE	CONDITION	CURB EVEN	CURB ODD	LENGTH (FT)	R-O-W	COST OF MATERIALS
D3-16	16TH	CONCRETE	8	S-CG	S-CG	356.3	60	\$37,416.51
D3-17	16TH	CONCRETE	8	S-CG	S-CG	353.9	60	\$37,160.86
D3-18	16TH	CONCRETE	8	S-CG	S-CG	348.3	60	\$36,576.62
D3-19	MAPLE	CONCRETE	8	S-CG	S-CG	363.2	60	\$38,141.23
D3-20	MAIN	CONCRETE	8	S-CG	S-CG	363.5	99	\$38,167.56
D3-21	KANSAS	CONCRETE	8	S-CG	S-CG	361.5	83	\$37,961.42
D3-22	ELM	CONCRETE	8	S-CG	S-CG	363.2	83	\$38,136.10
D3-23	15TH	CONCRETE	3	S-CG	S-CG	357.4	66	\$37,526.95
D3-24	15TH	CONCRETE	3	S-CG	S-CG	353.4	66	\$37,106.09
D3-25	15TH	CONCRETE	3	S-CG	S-CG	347.6	66	\$36,502.50
D3-26	15TH	CONCRETE	3	S-CG	S-CG	348.7	66	\$36,612.23
D3-27	15TH	CONCRETE	5	S-MONO	S-MONO	533.1	66	\$55,978.37
D3-28	15TH	CONCRETE	5	S-MONO	S-MONO	335.8	66	\$35,262.98
D3-29	15TH	CONCRETE	5	S-MONO	S-MONO	322.8	66	\$33,895.77
D3-30	15TH	CONCRETE	5	S-MONO	S-MONO	321.5	66	\$33,754.01
D3-31	MAPLE	CONCRETE	8	S-CG	S-CG	463.4	83	\$48,661.86
D3-32	MAIN	BRICK	7	S-CG	S-CG	459.9	99	\$246,965.67
D3-33	KANSAS	CONCRETE	8	S-CG	S-CG	459.1	83	\$48,208.67
D3-34	ELM	ASPHALT	8	NO CURB	NO CURB	459.2	83	\$48,212.61
D3-35	FOSSIL	CONCRETE	5	S-CG	S-CG	457.0	83	\$47,984.77
D3-36	FRONT	CONCRETE	8	S-CG	S-CG	461.6	83	\$48,469.79
D3-37	SEITZ	CONCRETE	8	S-CG	S-CG	461.9	83	\$48,503.74
D3-38	KRUG	CONCRETE	8	S-CG	S-CG	461.8	83	\$48,493.02
D3-39	FRANKLIN	CONCRETE	8	S-CG	S-CG	461.8	83	\$48,490.48
D3-40	14TH	CONCRETE	8	S-CG	S-CG	357.7	83	\$37,561.17
D3-41	14TH	CONCRETE	7	S-CG	S-CG	353.7	83	\$37,139.13
D3-42	14TH	ASPHALT	8	NO CURB	NO CURB	348.8	83	\$36,627.10
D3-43	14TH	ASPHALT	8	S-CG	S-CG	347.5	83	\$36,489.60
D3-44	14TH	CONCRETE	8	S-CG	S-CG	533.3	83	\$55,995.20
D3-45	14TH	CONCRETE	8	S-CG	S-CG	334.7	83	\$35,145.54
D3-46	14TH	CONCRETE	8	S-CG	S-CG	323.5	83	\$33,964.36
D3-47	14TH	CONCRETE	8	S-CG	S-CG	324.0	83	\$34,021.90
D4-01	MAPLE	ASPHALT	6	S-CG	S-CG	346.1	83	\$36,345.25
D4-02	MAIN	BRICK	6	S-CG	S-CG	347.8	99	\$186,742.20
D4-03	KANSAS	CONCRETE	8	S-CG	S-CG	348.3	83	\$36,574.29
D4-04	ELM	ASPHALT	6	NO CURB	NO CURB	346.4	83	\$36,367.76
D4-05	FOSSIL	CONCRETE	5	S-CG	S-CG	347.5	83	\$36,485.43
D4-06	FRONT	CONCRETE	8	S-CG	S-CG	339.5	83	\$35,647.23
D4-07	13TH	ASPHALT	6	NO CURB/ S-	NO CURB	356.1	83	\$37,386.30
D4-08	13TH	CONCRETE	8	S-CG	S-CG	354.4	83	\$37,210.61
D4-09	13TH	CONCRETE	8	S-CG	S-CG	345.9	83	\$36,321.70
D4-10	13TH	CONCRETE	8	S-CG	S-CG	349.7	83	\$36,715.17
D4-11	13TH	ASPHALT	6	NO CURB	NO CURB	532.6	83	\$55,928.17
D4-12	MAPLE	ASPHALT	6	S-CG	S-CG	347.8	83	\$36,515.09

STREET ID	ST NAME	SURFACE	CONDITION	CURB EVEN	CURB ODD	LENGTH (FT)	R-O-W	COST OF MATERIALS
D4-13	MAIN	BRICK	6	S-CG	S-CG	347.2	99	\$186,438.61
D4-14	KANSAS	ASPHALT	6	S-CG	S-CG	346.8	83	\$36,414.02
D4-15	ELM	CONCRETE	8	S-CG	S-CG	346.4	83	\$36,372.73
D4-16	FOSSIL	CONCRETE	5	S-CG	S-CG	346.1	83	\$36,337.70
D4-17	FRONT	CONCRETE	8	S-CG	S-CG	354.2	83	\$37,193.12
D4-18	SEITZ	CONCRETE	8	S-CG	S-CG	692.8	83	\$72,747.78
D4-19	KRUG	CONCRETE	8	S-CG	S-CG	694.8	83	\$72,958.50
D4-20	FRANKLIN	CONCRETE	8	S-CG	S-CG	693.8	83	\$72,852.38
D4-21	12TH	CONCRETE	8	S-CG	S-CG	355.1	83	\$37,281.66
D4-22	12TH	ASPHALT	6	S-CG	S-CG	355.5	83	\$37,324.67
D4-23	12TH	CONCRETE	8	S-CG	S-CG	345.4	83	\$36,271.34
D4-24	12TH	CONCRETE	8	S-CG	S-CG	348.1	83	\$36,555.17
D4-25	12TH	CONCRETE	8	LB-CG	LB-CG	533.9	83	\$56,062.35
D4-26	12TH	CONCRETE	8	S-CG	S-CG	334.6	83	\$35,135.91
D4-27	12TH	CONCRETE	8	S-CG	S-CG	322.8	83	\$33,896.75
D4-28	12TH	CONCRETE	8	S-CG	S-CG	325.2	83	\$34,150.73
D4-29	MAPLE	CONCRETE	8	S-CG	S-CG	346.0	83	\$36,333.92
D4-30	MAIN	BRICK	6	S-CG	S-CG	345.9	99	\$185,750.15
D4-31	KANSAS	ASPHALT	6	S-CG	S-CG	345.8	83	\$36,307.83
D4-32	ELM	ASPHALT	6	NO CURB	NO CURB	347.5	83	\$36,492.17
D4-33	FOSSIL	CONCRETE	5	S-CG	S-CG	349.5	83	\$36,692.87
D4-34	FRONT	SAND		NO CURB	NO CURB	265.2	83	\$12,466.63
D4-35	SEITZ			NO STREET	NO STREET	0.0	83	
D4-36	KRUG			NO STREET	NO STREET	0.0	83	
D4-37	FRANKLIN			NO STREET	NO STREET	0.0	83	
D4-38	11TH	CONCRETE	8	S-CG	S-CG	355.7	83	\$37,346.57
D4-39	11TH	CONCRETE	8	S-CG	S-CG	355.6	83	\$37,333.43
D4-40	11TH	CONCRETE	8	S-CG	S-CG	349.4	83	\$36,683.35
D4-41	11TH	CONCRETE	8	S-CG	S-CG	344.7	83	\$36,191.50
D4-42		SAND		NO CURB	NO CURB	570.4	0	\$26,807.21
D4-43	MAPLE	CONCRETE	8	S-CG	S-CG	346.7	83	\$36,405.39
D4-44	MAIN	BRICK	6	S-CG	S-CG	338.3	99	\$181,692.58
D4-45	KANSAS	SAND		NO CURB	NO CURB	210.7	83	\$9,901.57
D4-46	FOSSIL	CONCRETE	5	S-CG	S-CG	289.3	83	\$30,376.19
D4-47	MAIN	BRICK	6	S-CG	S-CG	372.8	99	\$200,171.71
D4-48	FOSSIL	CONCRETE	5	S-CG	S-CG	410.3	83	\$43,083.27
D4-49	9TH	ASPHALT	4			358.1	83	\$37,604.02
D4-50	9TH	BRICK	6	S-CG	S-CG	352.6	83	\$189,324.91
D4-51	9TH	CONCRETE	7	S-CG	S-CG	346.9	83	\$36,422.14
D4-52	9TH	CONCRETE	6	S-CG	LB-CG	348.6	83	\$36,598.36
D4-53	9TH	SAND		NO CURB/S-	S-CG/NO CURB	507.3	83	\$23,841.15
D4-54	MAPLE	ASPHALT	5	S-CG	S-CG	325.9	83	\$34,223.05
D4-55	MAIN	BRICK	6	S-CG	S-CG	332.9	99	\$178,791.68

STREET ID	ST NAME	SURFACE	CONDITION	CURB EVEN	CURB ODD	LENGTH (FT)	R-O-W	COST OF MATERIALS
D4-56	KANSAS	BRICK	6	S-CG	S-CG	343.2	83	\$110,162.35
D4-57	ELM	CONCRETE	7	S-CG	S-CG	342.7	83	\$35,984.82
D4-58	FOSSIL	CONCRETE	8	S-CG	S-CG	340.5	83	\$35,749.08
D4-64		SAND		NO CURB	NO CURB	261.5	0	\$12,291.94
D5-01	8TH	BRICK	5	S-CG	S-CG	356.7	83	\$191,556.93
D5-02	8TH	BRICK	5	S-CG	S-CG	353.6	83	\$189,910.02
D5-03	8TH	CONCRETE	7	S-CG	S-CG	346.3	83	\$36,365.84
D5-04	8TH	CONCRETE	7	S-CG	S-CG	348.3	83	\$36,568.12
D5-05	STATE	CONCRETE	7	S-MONO	LB-CG	523.4	66	\$54,951.92
D5-06	STATE	CONCRETE	5	S-MONO	S-MONO	503.3	66	\$52,846.93
D5-07	STATE	CONCRETE	5	S-MONO	S-MONO	510.5	66	\$53,600.29
D5-08	MAPLE	BRICK	5	S-CG	S-CG	346.1	83	\$111,108.47
D5-09	MAIN	BRICK	5	S-CG	S-CG	346.7	99	\$186,166.02
D5-10	KANSAS	BRICK	5	S-CG	S-CG	347.9	83	\$111,685.30
D5-11	ELM	CONCRETE	8	S-CG	S-CG	346.5	83	\$36,384.26
D5-12	FOSSIL	CONCRETE	8	S-MONO	S-MONO	350.9	83	\$36,845.44
D5-13	FRONT	CONCRETE	8	S-MONO	LB-MONO	291.4	33	\$30,597.70
D5-14	SEITZ	CONCRETE	8	S-CG	S-CG	233.8	60	\$24,545.38
D5-15	FRANKLIN	CONCRETE	8	S-CG	S-CG	235.8	60	\$24,760.76
D5-16	7TH	BRICK	5	S-CG	S-CG	356.3	83	\$191,324.52
D5-17	7TH	BRICK	5	S-CG	S-CG	353.0	83	\$189,562.13
D5-18	7TH	BRICK	5	S-CG	S-CG	347.6	83	\$186,668.38
D5-19	7TH	BRICK	5	S-CG	S-CG	348.6	83	\$187,217.06
D5-20	7TH	BRICK	5	S-CG	S-CG	501.3	83	\$269,183.42
D5-21	7TH	BRICK	5	S-CG	S-CG	502.6	83	\$269,876.22
D5-22	7TH	BRICK	5	S-CG	S-CG	510.2	83	\$273,993.47
D5-23	MAPLE	BRICK	5	S-CG	S-CG	355.3	83	\$114,055.00
D5-24	MAIN	BRICK	5	S-CG	S-CG	354.8	99	\$190,501.22
D5-25	KANSAS	BRICK	5	S-CG	S-CG	354.7	83	\$113,866.79
D5-26	ELM	BRICK	4	S-CG	S-CG	355.1	83	\$113,997.24
D5-27	FOSSIL	CONCRETE	8	S-MONO	S-MONO	354.0	83	\$37,167.82
D5-28	FRONT	CONCRETE	8	S-CG	S-CG	354.0	66	\$37,174.78
D5-29	SEITZ	CONCRETE	8	S-CG	S-CG	355.6	60	\$37,338.02
D5-30	FRANKLIN	CONCRETE	8	S-CG	S-CG	355.9	60	\$37,366.79
D5-31	WISCONSIN	BRICK	5	S-CG	S-CG	356.9	99	\$191,675.10
D5-32	WISCONSIN	BRICK	5	S-CG	S-CG	353.2	99	\$189,673.40
D5-33	WISCONSIN	BRICK	5	S-CG	S-CG	346.5	99	\$186,062.17
D5-34	WISCONSIN	BRICK	5	S-CG	S-CG	348.2	99	\$186,967.35
D5-35	WISCONSIN	CONCRETE	8	S-CG	S-CG	503.0	99	\$52,815.36
D5-36	WISCONSIN	CONCRETE	8	S-CG	S-CG	500.6	99	\$52,566.32
D5-37	WISCONSIN	CONCRETE	8	S-CG	S-CG	508.2	99	\$53,362.36
D5-38	MAPLE	BRICK	5	S-CG	S-CG	354.9	83	\$113,927.27
D5-39	MAIN	BRICK	5	S-CG	S-CG	353.9	99	\$190,059.57
D5-40	KANSAS	BRICK	5	S-CG	S-CG	355.1	83	\$113,972.57

STREET ID	ST NAME	SURFACE	CONDITION	CURB EVEN	CURB ODD	LENGTH (FT)	R-O-W	COST OF MATERIALS
D5-41	ELM	BRICK	4	S-CG	S-CG	354.9	83	\$113,929.26
D5-42	FOSSIL	CONCRETE	8	S-MONO	S-MONO	356.7	83	\$37,454.11
D5-43	FRONT	CONCRETE	8	S-MONO	S-CG	355.3	66	\$37,310.16
D5-44	SEITZ	CONCRETE	8	S-CG	S-CG	353.2	60	\$37,086.98
D5-45	FRANKLIN	CONCRETE	8	S-CG	S-CG	352.1	60	\$36,972.95
D5-46	5TH	BRICK	5	S-CG	S-CG	354.7	83	\$113,848.48
D5-47	5TH	BRICK	5	S-CG	S-CG	355.3	83	\$114,066.80
D5-48	5TH	BRICK	5	S-CG	S-CG	347.3	83	\$111,484.05
D5-49	5TH	BRICK	5	S-CG	S-CG	347.7	83	\$111,618.82
D5-50	5TH	CONCRETE	8	S-CG	S-CG	500.0	83	\$52,503.34
D5-51	5TH	CONCRETE	8	S-CG	S-CG	501.8	83	\$52,689.26
D5-52	5TH	CONCRETE	8	S-CG	S-CG	511.5	83	\$53,710.00
D5-53	MAPLE	BRICK	5	S-CG	S-CG	345.6	83	\$110,949.00
D5-54	MAIN	BRICK	5	S-CG	S-CG	346.4	99	\$186,028.46
D5-55	KANSAS	BRICK	5	S-CG	S-CG	346.9	83	\$111,342.89
D5-56	ELM	BRICK	4	S-CG	S-CG	346.9	83	\$111,353.37
D5-57	FOSSIL	CONCRETE	8	S-MONO	S-MONO	346.0	83	\$36,328.94
D5-58	FRONT	CONCRETE	8	S-MONO	S-MONO	348.7	33	\$36,613.38
D5-59	SEITZ	CONCRETE	8	S-CG	S-CG	350.0	60	\$36,747.67
D5-60	FRANKLIN	CONCRETE	8	S-CG	S-CG	348.7	60	\$36,611.66
D5-61	4TH	BRICK	5	S-CG	S-CG	353.9	83	\$113,593.82
D5-62	ARTESIA	BRICK	5	S-CG	S-CG	355.5	41	\$114,130.10
D5-63	COURT	BRICK	5	S-CG	S-CG	355.7	41	\$114,191.38
D5-64	4TH	BRICK	5	S-CG	S-CG	347.2	83	\$111,451.78
D5-65	4TH	BRICK	5	S-CG	S-CG	347.1	83	\$111,426.35
D5-66	4TH	CONCRETE	8	S-CG	S-CG	497.6	83	\$52,247.32
D5-67	4TH	CONCRETE	8	S-CG	S-CG	504.3	83	\$52,947.84
D5-68	4TH	CONCRETE	8	S-CG	S-CG	510.6	83	\$53,615.93
D5-69	MAPLE	BRICK	5	S-CG	S-CG	347.3	83	\$111,477.38
D5-70	MAIN	BRICK	5	S-CG	S-CG	347.6	99	\$186,655.23
D5-71	KANSAS	BRICK	5	S-CG	S-CG	345.5	83	\$110,892.84
D5-72	ELM	BRICK	4	S-CG	S-CG	346.0	83	\$111,059.62
D5-73	FOSSIL	CONCRETE	8	S-MONO	S-MONO	346.5	83	\$36,380.54
D5-74	FRONT	CONCRETE	8	S-MONO	S-MONO	347.2	33	\$36,457.61
D5-75	SEITZ	CONCRETE	8	S-CG	S-CG	348.1	60	\$36,549.78
D5-76	FRANKLIN	CONCRETE	8	S-CG	S-CG	347.1	60	\$36,446.44
D5-77	3RD	BRICK	5	S-CG	S-CG	354.4	83	\$113,753.99
D5-78	3RD	BRICK	5	S-CG	S-CG	355.9	83	\$114,246.75
D5-79	3RD	BRICK	5	S-CG	S-CG	347.1	83	\$111,427.73
D5-80	3RD	BRICK	5	S-CG	S-CG	347.8	83	\$111,640.14
D5-81	3RD	CONCRETE	5	S-CG	S-CG	495.4	83	\$52,018.17
D5-82	3RD	CONCRETE	8	S-CG	S-CG	506.9	83	\$53,223.37
D5-83	3RD	CONCRETE	8	S-CG	S-CG	510.0	83	\$53,549.31
D5-84	MAPLE	BRICK	5	S-CG	S-CG	347.1	83	\$111,418.16

STREET ID	ST NAME	SURFACE	CONDITION	CURB EVEN	CURB ODD	LENGTH (FT)	R-O-W	COST OF MATERIALS
D5-85	MAIN	BRICK	5	S-CG	S-CG	347.3	99	\$186,508.71
D5-86	KANSAS	BRICK	5	S-CG	S-CG	347.5	83	\$111,551.27
D5-87	ELM	BRICK	4	S-CG	S-CG	347.9	83	\$111,662.79
D5-88	FOSSIL	CONCRETE	8	S-MONO	S-MONO	347.3	83	\$36,462.04
D5-89	FRONT	CONCRETE	8	S-CG	S-CG	344.5	66	\$36,172.70
D5-90	SEITZ	CONCRETE	8	S-CG	S-CG	347.3	60	\$36,470.68
D6-01	2ND	BRICK	5	S-CG	S-CG	355.5	83	\$114,118.66
D6-02	2ND	BRICK	5	S-CG	S-CG	355.1	83	\$114,002.36
D6-03	2ND	BRICK	5	S-CG	S-CG	347.8	83	\$111,630.44
D6-04	2ND	BRICK	5	S-CG	S-CG	347.4	83	\$111,500.62
D6-05	2ND	CONCRETE	8	S-CG	S-CG	493.4	83	\$51,802.09
D6-06	2ND	CONCRETE	8	S-CG	S-CG	509.7	83	\$53,520.27
D6-07	2ND	CONCRETE	7	S-CG	S-CG	510.8	83	\$53,629.00
D6-08	MAPLE	BRICK	5	S-CG	S-CG	346.0	83	\$111,051.05
D6-09	MAIN	BRICK	5	S-CG	S-CG	345.8	99	\$185,671.88
D6-10	KANSAS	BRICK	5	S-CG	S-CG	345.5	83	\$110,921.21
D6-11	ELM	BRICK	5	S-CG	S-CG	345.5	83	\$110,898.88
D6-12	FOSSIL	CONCRETE	8	S-CG	S-CG	345.9	83	\$36,315.49
D6-13	FRONT	CONCRETE	8	S-CG	S-CG	347.4	66	\$36,476.08
D6-14	SEITZ	CONCRETE	8	S-CG	S-CG	346.2	60	\$36,348.69
D6-15	FRANKLIN	CONCRETE	6	S-CG	S-CG	350.2	60	\$36,768.62
D6-16	1ST	BRICK	5	S-CG	S-CG	355.7	83	\$114,179.94
D6-17	1ST	BRICK	5	S-CG	S-CG	354.8	83	\$113,877.28
D6-18	1ST	BRICK	5	S-CG	S-CG	348.1	83	\$111,742.43
D6-19	1ST	BRICK	5	S-CG	S-CG	346.4	83	\$111,193.31
D6-20	1ST	CONCRETE	7	S-CG	S-CG	493.5	83	\$51,819.50
D6-21	1ST	CONCRETE	8	S-CG	S-CG	510.7	83	\$53,618.57
D6-22	1ST	CONCRETE	8	S-CG	S-CG	509.0	83	\$53,448.46
D6-23	MAPLE	BRICK	5	S-CG	S-CG	299.6	83	\$96,180.14
D6-24	MAIN	BRICK	5	S-CG	S-CG	302.9	99	\$162,641.09
D6-25	KANSAS	BRICK	5	S-CG	S-CG	303.4	83	\$97,390.21
D6-26	ELM	BRICK	5	S-CG	S-CG	304.8	83	\$97,827.70
D6-27	FOSSIL	CONCRETE	8	S-CG	S-CG	303.7	83	\$31,886.04
D6-28	FRONT	CONCRETE	8	LB-CG	S-CG	307.7	66	\$32,305.89
D6-29	SEITZ	CONCRETE	8	S-CG	S-CG	306.7	60	\$32,202.33
D6-30	FRANKLIN	CONCRETE	8	S-CG	S-CG	306.6	60	\$32,193.76
D6-31	WICHITA	ASPHALT	8	S-CG	S-CG	356.0	70	\$37,382.54
D6-32	WICHITA	ASPHALT	8	S-CG	S-CG	354.0	70	\$37,173.12
D6-33	WICHITA	ASPHALT	8	S-CG	S-CG	347.4	70	\$36,477.71
D6-34	WICHITA	ASPHALT	8	S-CG	S-CG	346.7	65	\$36,399.32
D6-35	WICHITA	ASPHALT	7	S-CG	S-CG	493.5	65	\$51,820.00
D6-36	WICHITA	ASPHALT	7	S-CG	S-CG	511.2	75	\$53,679.46
D6-37	WICHITA	ASPHALT	7	S-CG	S-CG	508.6	70	\$53,404.31
D6-38	MAPLE	CONCRETE	8	S-CG	S-CG	827.5	83	\$86,884.30

STREET ID	ST NAME	SURFACE	CONDITION	CURB EVEN	CURB ODD	LENGTH (FT)	R-O-W	COST OF MATERIALS
D6-39	MAIN	CONCRETE	8	S-CG	S-CG	816.4	99	\$85,723.32
D6-40	KANSAS	CONCRETE	8	S-CG	S-CG	826.4	83	\$86,770.03
D6-41	ELM	CONCRETE	8	S-CG	LB-CG	837.5	83	\$87,933.46
D6-42	FOSSIL	CONCRETE	7	S-CG	S-CG	840.1	83	\$88,209.93
D6-43	FRONT	CONCRETE	8	S-MONO	S-CG	335.3	80	\$35,210.71
D6-44	SEITZ	CONCRETE	8	S-CG	S-CG	335.6	60	\$35,237.67
D6-45	FRANKLIN	CONCRETE	8	S-MONO	S-MONO	335.8	60	\$35,259.93
D6-46	OAKDALE	ASPHALT	5	S-CG	S-CG	513.9	70	\$53,959.77
D6-47	OAKDALE	ASPHALT	5	S-CG	S-CG	508.8	70	\$53,422.26
D6-48	FRONT	CONCRETE	8	LB-MONO	S-CG	329.4	80	\$34,590.57
D6-49	SEITZ	CONCRETE	8	S-MONO	S-MONO	329.0	60	\$34,541.41
D6-50	FRANKLIN	CONCRETE	8	S-MONO	S-MONO	329.5	60	\$34,601.27
D6-51	JEWELL	CONCRETE	8	S-CG	S-CG	354.4	70	\$37,215.10
D6-52	JEWELL	CONCRETE	7	S-CG	S-CG	353.7	70	\$37,138.86
D6-53	JEWELL	CONCRETE	8	S-MONO	S-MONO	353.2	60	\$37,088.44
D6-54	JEWELL	CONCRETE	8	S-MONO	S-MONO	343.8	60	\$36,094.80
D6-55	SUNSET	ASPHALT	5	S-CG	S-CG	513.0	70	\$53,866.91
D6-56	SUNSET	ASPHALT	5	S-CG	S-CG	510.1	70	\$53,557.20
D6-57	MAPLE	CONCRETE	8	S-CG	S-CG	500.9	83	\$52,599.31
D6-58	KANSAS	CONCRETE	8	S-CG	S-CG	503.0	83	\$52,811.45
D6-59	ELM	CONCRETE	8	S-CG	S-CG	491.5	83	\$51,611.59
D6-60	FOSSIL	ASPHALT	7	S-CG	S-CG	490.8	83	\$51,533.04
D6-61	FRONT	CONCRETE	8	LB-MONO	S-MONO	663.5	80	\$69,663.21
D6-62	SEITZ	CONCRETE	8	S-MONO	S-MONO	330.8	60	\$34,729.56
D6-63	FRANKLIN	CONCRETE	8	S-MONO	S-MONO	329.2	60	\$34,567.02
D6-64	MARGARET	ASPHALT	5	S-CG	S-CG	281.5	70	\$29,552.69
D6-65	MARGARET	ASPHALT	8	S-CG	S-CG	509.3	70	\$53,476.04
D6-66	SEITZ	CONCRETE	8	S-MONO	S-MONO	174.5	60	\$18,322.55
D6-67	SEITZ	CONCRETE	8	S-MONO	S-MONO	75.7	60	\$7,944.68
D6-68	FRANKLIN	CONCRETE	8	S-MONO	S-MONO	155.0	60	\$16,277.23
D7-01	LURAY	CONCRETE	7	S-CG	S-CG	355.3	60	\$37,309.65
D7-02	LURAY	CONCRETE	7	S-CG	S-CG	353.2	60	\$37,085.72
D7-03	LURAY	CONCRETE	7	S-CG	S-CG	347.4	60	\$36,478.84
D7-04	LURAY	CONCRETE	7	S-MONO	S-MONO	345.4	60	\$36,270.93
D7-05	LURAY	CONCRETE	8	S-CG	LB-MONO	495.7	60	\$52,053.51
D7-06	MAIN	CONCRETE	8	S-CG	S-CG	198.7	99	\$20,860.17
D7-07	KANSAS	CONCRETE	8	S-CG	S-CG	198.2	83	\$20,812.20
D7-08	ELM	CONCRETE	8	S-CG	S-CG	196.9	83	\$20,669.35
D7-09	FOSSIL	CONCRETE	5	S-MONO	S-MONO	651.6	83	\$68,422.65
D7-10	FRONT	CONCRETE	8	S-MONO	S-MONO	652.5	80	\$68,513.55
D7-12	FOSSIL	CONCRETE	5	S-MONO	S-MONO	652.6	10	\$68,520.29
D7-13	FRONT	CONCRETE	8	S-MONO	S-MONO	652.5	80	\$68,508.25
D7-14	DORRANCE	ASPHALT	5	NO CURB	NO CURB	364.2	60	\$38,245.71
D7-15	DORRANCE	ASPHALT	5	NO CURB	NO CURB	683.7	60	\$71,790.71

STREET ID	ST NAME	SURFACE	CONDITION	CURB EVEN	CURB ODD	LENGTH (FT)	R-O-W	COST OF MATERIALS
D7-16	LUCAS	CONCRETE	8	LB-MONO	LB-MONO	494.3	60	\$51,903.39
D7-17	DORRANCE	ASPHALT	5	NO CURB	NO CURB	492.5	50	\$51,713.07
D7-18	MAIN	SAND		NO CURB	NO CURB	415.1	60	\$19,511.10
D8-01	MAIN	SAND		NO CURB	NO CURB	917.4	60	\$43,116.67
D8-02	KANSAS	SAND		NO CURB	NO CURB	1,518.0	60	\$71,345.58
D8-03	FOSSIL	ASPHALT	6	S-CG	S-CG	1,540.6	10	\$161,759.77
D8-04	FRONT	CONCRETE	8	S-MONO	S-MONO	1,566.7	80	\$164,508.13
D8-05	MAIN	SAND		NO CURB	NO CURB	178.3	60	\$8,379.75
D8-06	MAIN			NO STREET	NO STREET	0.0	60	
D8-07	CARTER	SAND		NO CURB	NO CURB	429.4	60	\$20,181.34
D8-08	CARTER	SAND		NO CURB	NO CURB	625.4	60	\$29,392.20
D8-09	FOSSIL	ASPHALT	6	S-CG	S-CG	746.6	10	\$78,397.80
D8-10	FOSSIL	ASPHALT	6	S-CG	S-CG	349.0	10	\$36,644.12
D8-11	FRONT	CONCRETE	8	S-CG	S-MONO	518.3	80	\$54,418.05
D8-12	FRONT	CONCRETE	8	S-CG	S-MONO	306.6	80	\$32,194.99
D8-13	FRONT	CONCRETE	8	S-CG	S-MONO	241.6	80	\$25,373.08
D9-01	WITT	ASPHALT	5	S-CG	S-CG	845.9	60	\$88,818.47
D9-02	WITT	ASPHALT	5	S-CG	S-CG	297.1	60	\$31,198.41
D9-03	HOMER	SAND		NO CURB	NO CURB	513.7	60	\$24,144.45
D9-04	MAIN	SAND		NO CURB	NO CURB	466.6	60	\$21,930.90
D9-05	NENAH			NO STREET	NO STREET	0.0	60	
D9-06	PAULS	SAND		NO CURB	NO CURB	467.6	60	\$21,977.87
D9-07	STEPHANIE	CONCRETE	8	S-MONO	S-MONO	471.6	60	\$49,522.25
D9-08	AMY	CONCRETE	8	S-MONO	S-MONO	843.8	60	\$88,598.99
D9-09	FOSSIL	ASPHALT	6	S-CG	S-CG	314.8	10	\$33,052.57
D9-10	FRONT	CONCRETE	8	S-MONO	S-MONO	378.9	80	\$39,779.87
D9-11	MAIN	SAND		NO CURB	NO CURB	320.0	60	\$15,038.14
D9-12	STEPHANIE	CONCRETE	8	S-MONO	S-MONO	320.6	60	\$33,658.82
D9-13	BARBARA	CONCRETE	8	S-MONO	S-MONO	847.4	60	\$88,979.70
D9-14	MAIN	SAND		NO CURB	NO CURB	320.5	60	\$15,062.45
D9-15	STEPHANIE	CONCRETE	8	S-MONO	S-MONO	322.8	60	\$33,894.42
D9-16	BRUCE	ASPHALT	6	NO CURB	NO CURB	846.2	60	\$88,853.27
D9-17	MAIN	SAND		NO CURB	NO CURB	323.1	60	\$15,186.27
D9-18	STEPHANIE	ASPHALT	6	NO CURB	NO CURB	322.3	60	\$33,840.22
D9-19	CECIL	SAND		NO CURB	NO CURB	845.6	60	\$39,742.26
D9-20	MAIN	SAND		NO CURB	NO CURB	351.5	60	\$16,518.48
D9-21	STEPHANIE	ASPHALT	6	NO CURB	NO CURB	309.8	60	\$32,533.19
D9-22	EDWARD	SAND		NO CURB	NO CURB	862.9	60	\$40,557.77
D9-23	EDWARD	ASPHALT	5			847.3	60	\$88,966.05
D9-24	FOSSIL	ASPHALT	6			438.0	10	\$45,995.06
D9-25	FOSSIL STRE	CONCRETE	7			624.4	0	\$65,558.80
D9-26	FOSSIL FRON	ASPHALT	5			1,142.8	0	\$119,992.80
D9-27	FRONT	ASPHALT	5			347.3	80	\$36,464.42
D9-28	FRONT	CONCRETE	8			286.2	80	\$30,055.74

STREET ID	ST NAME	SURFACE	CONDITION	CURB EVEN	CURB ODD	LENGTH (FT)	R-O-W	COST OF MATERIALS
D9-29	FRONT	CONCRETE	8			161.1	80	\$16,914.30
D9-30	FOSSIL	ASPHALT	6	S-CG	S-CG	262.3	10	\$27,539.50
D9-31	FOSSIL	ASPHALT	6			491.1	10	\$51,563.00
D9-32	FOSSIL	ASPHALT	6			467.7	10	\$49,110.04
D9-33	FOSSIL	ASPHALT	6			228.6	10	\$23,999.07
D9-34	BRANDENBU	SAND		NO CURB	NO CURB	311.8	0	\$14,653.51
E3-01	186TH	SAND		NO CURB	NO CURB	2,639.2	60	\$124,042.47
E3-02	15TH	CONCRETE	7	S-MONO	S-MONO	325.4	66	\$34,166.24
E3-03	15TH	CONCRETE	7	S-MONO	S-MONO	1,326.2	66	\$139,254.00
E3-04	15TH	CONCRETE	7	S-MONO	S-MONO	2,668.4	80	\$280,183.87
E3-05	CULP	CONCRETE	8	S-CG	S-MONO	461.7	83	\$48,475.42
E3-06	MERCEDA			NO STREET	NO STREET	0.0	60	
E3-07	14TH	ASPHALT	8	S-CG	S-CG	323.6	83	\$33,977.88
E3-08	14TH			NO STREET	NO STREET	0.0	60	
E3-09	COPELAND	ASPHALT	4	NO CURB	NO CURB	1,223.7	70	\$128,483.54
E4-01	CULP	CONCRETE	8	S-CG	S-MONO	692.5	83	\$72,712.05
E4-02	MERCEDA			NO STREET	NO STREET	0.0	60	
E4-03	COPELAND	ASPHALT	4	NO CURB	NO CURB	1,410.1	0	\$148,063.15
E4-04	12TH	CONCRETE	8	S-CG	S-CG	324.2	83	\$34,037.80
E4-05	12TH			NO STREET	NO STREET	0.0	60	
E4-06	CULP			NO STREET	NO STREET	0.0	83	
E5-01	STATE	ASPHALT	5	S-MONO	S-MONO	508.5	66	\$53,392.59
E5-02	STATE	ASPHALT	5	NO CURB	NO CURB	563.4	66	\$59,155.86
E5-03	STATE	ASPHALT	5	NO CURB	NO CURB	563.8	66	\$59,196.77
E5-04	STATE	CONCRETE	5	NO CURB	NO CURB	896.7	66	\$94,151.94
E5-05	STATE	CONCRETE	5	NO CURB	NO CURB	464.1	66	\$48,728.15
E5-06	CULP	CONCRETE	8	S-CG	S-CG	236.6	60	\$24,847.23
E5-07	OBER	CONCRETE	8	S-CG	S-CG	236.4	60	\$24,817.61
E5-08	COPELAND	CONCRETE	5	S-CG	S-CG	236.8	70	\$24,868.40
E5-09	PINE	CONCRETE	8	S-CG	S-CG	695.3	60	\$73,011.48
E5-10	FAIRWAY	ASPHALT	6	S-CG	S-CG	693.8	65	\$72,854.15
E5-11	7TH	CONCRETE	8	S-CG	S-CG	509.2	83	\$53,460.99
E5-12	7TH	CONCRETE	8	S-CG	S-CG	562.9	83	\$59,108.73
E5-13	7TH	CONCRETE	8	S-CG	S-CG	562.6	83	\$59,068.91
E5-14	7TH	CONCRETE	8	S-CG	S-CG	654.0	83	\$68,664.84
E5-15	CULP	CONCRETE	8	S-MONO	S-MONO	353.5	60	\$37,117.28
E5-16	OBER	CONCRETE	8	S-CG	S-CG	351.9	60	\$36,949.51
E5-17	COPELAND	CONCRETE	5	S-CG	S-CG	352.5	70	\$37,015.63
E5-18	WISCONSIN	CONCRETE	8	S-CG	S-CG	511.3	99	\$53,685.05
E5-19	WISCONSIN	CONCRETE	8	S-CG	S-CG	562.7	99	\$59,086.07
E5-20	WISCONSIN	CONCRETE	8	S-CG	S-CG	562.9	99	\$59,104.42
E5-21	PARKSIDE	CONCRETE	8	S-MONO	S-MONO	894.6	60	\$93,935.84
E5-22	PARKSIDE	CONCRETE	7	S-MONO	S-MONO	472.0	60	\$49,556.26
E5-23	CULP	CONCRETE	8	S-MONO	S-MONO	353.8	60	\$37,152.98

STREET ID	ST NAME	SURFACE	CONDITION	CURB EVEN	CURB ODD	LENGTH (FT)	R-O-W	COST OF MATERIALS
E5-24	OBER	CONCRETE	8	S-CG	S-CG	354.9	60	\$37,268.08
E5-25	COPELAND	CONCRETE	5	S-CG	S-CG	357.2	70	\$37,501.61
E5-26	5TH	CONCRETE	8	S-CG	S-CG	507.3	83	\$53,266.17
E5-27	5TH	CONCRETE	8	S-CG	S-CG	563.2	83	\$59,133.28
E5-28	5TH	CONCRETE	8	S-CG	S-CG	564.7	83	\$59,291.20
E5-29	CULP	CONCRETE	8	S-CG	S-CG	346.7	60	\$36,403.96
E5-30	OBER	CONCRETE	8	S-CG	S-CG	347.3	60	\$36,468.24
E5-31	COPELAND	CONCRETE	5	S-CG	S-CG	346.4	70	\$36,374.99
E5-32	4TH	CONCRETE	7	S-CG	S-CG	508.8	83	\$53,424.62
E5-33	4TH	CONCRETE	8	S-CG	S-CG	562.7	83	\$59,082.99
E5-34	4TH	CONCRETE	8	S-CG	S-CG	564.8	83	\$59,308.98
E5-35	4TH	CONCRETE	8	S-CG	S-CG	339.7	83	\$35,667.00
E5-36	CULP	CONCRETE	8	S-MONO	S-MONO	346.8	60	\$36,414.12
E5-37	OBER	CONCRETE	8	S-MONO	S-MONO	344.5	60	\$36,168.68
E5-38	COPELAND	CONCRETE	5	S-MONO	S-MONO	345.7	70	\$36,300.42
E5-39	BOB DOLE	CONCRETE	8	S-CG	S-CG	346.4	83	\$36,373.81
E5-40	3RD	CONCRETE	8	S-CG	S-CG	508.3	83	\$53,370.73
E5-41	3RD	CONCRETE	8	S-CG	S-CG	561.5	83	\$58,959.70
E5-42	3RD	CONCRETE	8	S-CG	S-CG	565.5	83	\$59,376.40
E5-43	3RD	CONCRETE	8	S-CG	S-CG	341.0	83	\$35,805.17
E5-44	CULP	CONCRETE	8	S-MONO	S-MONO	347.7	60	\$36,504.63
E5-45	OBER	CONCRETE	8	S-CG	S-CG	347.7	60	\$36,510.64
E5-46	COPELAND	CONCRETE	5	S-MONO	S-MONO	343.8	70	\$36,102.50
E5-47	BOB DOLE	CONCRETE	8	S-CG	S-MONO	348.2	83	\$36,559.16
E6-01	2ND	CONCRETE	7	S-CG	S-CG	506.9	83	\$53,222.70
E6-02	2ND	CONCRETE	7	S-CG	S-CG	561.5	83	\$58,952.87
E6-03	2ND	CONCRETE	8	S-CG	S-CG	565.0	83	\$59,329.40
E6-04	2ND	CONCRETE	8	S-CG	S-CG	345.9	83	\$36,324.74
E6-05	OBER	CONCRETE	8	S-CG	S-CG	347.2	60	\$36,453.11
E6-06	COPELAND	CONCRETE	5	S-MONO	S-MONO	348.6	70	\$36,606.74
E6-07	1ST	CONCRETE	8	S-CG	S-CG	276.6	83	\$29,040.79
E6-08	1ST	CONCRETE	8	S-CG	S-CG	564.9	83	\$59,312.15
E6-09	OBER	CONCRETE	7	S-CG	S-CG	317.8	60	\$33,368.92
E6-10	COPELAND	CONCRETE	5	S-MONO	S-MONO	319.8	70	\$33,582.71
E6-11	WICHITA	ASPHALT	7	S-CG	S-CG	512.6	70	\$53,821.86
E6-12	WICHITA	ASPHALT	7	NO CURB	NO CURB	555.4	80	\$58,320.30
E6-13	WICHITA	ASPHALT	7	NO CURB	NO CURB	564.0	80	\$59,220.74
E6-14	WICHITA	ASPHALT	7	NO CURB	NO CURB	308.0	80	\$32,335.01
E6-15	WICHITA	ASPHALT	7	NO CURB	NO CURB	305.8	80	\$32,109.81
E6-16	WICHITA	ASPHALT	7	NO CURB	NO CURB	328.4	80	\$34,478.95
E6-17	WICHITA	ASPHALT	7	NO CURB	NO CURB	361.6	80	\$37,972.29
E6-18	CULP	CONCRETE	8	S-CG	S-CG	334.6	60	\$35,136.80
E6-19	COPELAND			NO STREET	NO STREET	0.0	30	
E6-20	JAY	CONCRETE	8	LB-CG	LB-CG	671.2	60	\$70,480.14

STREET ID	ST NAME	SURFACE	CONDITION	CURB EVEN	CURB ODD	LENGTH (FT)	R-O-W	COST OF MATERIALS
E6-21	CINDY	CONCRETE	8	LB-MONO	LB-MONO	1,308.8	60	\$137,427.22
E6-22	OAKDALE	ASPHALT	6	S-CG	S-CG	509.8	70	\$53,529.84
E6-23	OAKDALE	ASPHALT	4	S-CG	S-CG	280.0	70	\$29,400.16
E6-24	CULP	CONCRETE	8	S-CG	S-CG	331.8	60	\$34,841.28
E6-25	SUNSET	ASPHALT	6	S-CG	S-CG	509.3	70	\$53,475.53
E6-26	SUNSET	ASPHALT	4	S-CG	S-CG	280.0	70	\$29,394.93
E6-27	SUNSET			NO STREET	NO STREET	0.0	60	
E6-28	SUNSET			NO STREET	NO STREET	0.0	60	
E6-29	CULP	CONCRETE	8	S-CG	S-CG	329.2	60	\$34,569.62
E6-30	MARGARET	CONCRETE	8	S-CG	S-CG	510.3	70	\$53,582.69
E6-31	MARGARET	DIRT		NO CURB	NO CURB	280.0	70	\$13,160.92
E6-32	CULP	CONCRETE	8	S-MONO	S-MONO	155.1	60	\$16,288.68
F5-01	STATE	ASPHALT	5	NO CURB	NO CURB	1,318.7	66	\$138,464.65
F5-02	STATE	SAND		NO CURB	NO CURB	434.8	66	\$20,434.11
F5-03	AMBER	ASPHALT	6	NO CURB	NO CURB	208.0	60	\$21,839.99
F5-04	ST ANNE	SAND		NO CURB	NO CURB	503.0	50	\$23,642.38
F5-05	AMBER	ASPHALT	6	NO CURB	NO CURB	1,249.1	60	\$131,160.33
F5-06	TERRACE	SAND		NO CURB	NO CURB	1,250.0	73	\$58,750.79
F5-07	GENTIAN	SAND		NO CURB	NO CURB	521.8	50	\$24,524.59
F6-01	WICHITA	ASPHALT	5	NO CURB	NO CURB	1,337.1	80	\$140,399.63
F6-02	HIGHWAY 40	ASPHALT	5	NO CURB	NO CURB	274.2	12	\$28,788.92
F6-03	AMBER	ASPHALT	5	NO CURB	NO CURB	1,209.4	60	\$126,986.09
F6-04	186TH	SAND				627.0	60	\$29,467.42

**TOTAL COST OF SURFACE TYPE:** \$37,123,051.23

TOTAL STREET LENGTH: 287,293.62 FT  
54.41 MI

ASPHALT TOTALS

<b>SURFACE</b>	<b>TOTAL COST</b>	<b>TOTAL LENGTH (FT)</b>	<b>TOTAL LENGTH (MI)</b>
ASPHALT	\$6,663,678.88	63,463.61	12.02

CONCRETE TOTALS

<b>SURFACE</b>	<b>TOTAL COST</b>	<b>TOTAL LENGTH (FT)</b>	<b>TOTAL LENGTH (MI)</b>
CONCRETE	\$17,574,781.58	167,378.87	31.70

BRICK TOTALS

<b>SURFACE</b>	<b>TOTAL COST</b>	<b>TOTAL LENGTH (FT)</b>	<b>TOTAL LENGTH (MI)</b>
BRICK	\$11,382,760.12	28,377.87	5.37

SAND TOTALS

<b>SURFACE</b>	<b>TOTAL COST</b>	<b>TOTAL LENGTH (FT)</b>	<b>TOTAL LENGTH (MI)</b>
SAND	\$1,306,282.48	27,793.24	5.26

DIRT TOTALS

<b>SURFACE</b>	<b>TOTAL COST</b>	<b>TOTAL LENGTH (FT)</b>	<b>TOTAL LENGTH (MI)</b>
DIRT	\$13,160.92	280.02	0.05